

DATASHEET

JAM3 Rabbit Polyclonal Antibody

CAT. NO. APA15947

KEY FEATURES

Target	JAM3	Source / Host	Rabbit
Reactivity	Human, Mouse, Rat	Clonality	Polyclonal
Applications	WB	Conjugation	Unconjugated
Form / Buffer	Liquid in 0.42% Potassium phosphate, 0.87% Sodium chloride, pH 7.3, 30% glycerol, and 0.01% sodium azide.		Storage at-20°C

BACKGROUND

Junctional adhesion protein that mediates heterotypic cell-cell interactions with its cognate receptor JAM2 to regulate different cellular processes . Plays a role in homing and mobilization of hematopoietic stem and progenitor cells within the bone marrow. At the surface of bone marrow stromal cells, it contributes to the retention of the hematopoietic stem and progenitor cells expressing JAM3 . Plays a central role in leukocytes extravasation by facilitating transmigration through the endothelium .

APPLICATION

To ensure optimal assay performance, AREX recommends conducting reagent titration tailored to each testing system for optimal detection results.

WB	1:500 - 1:2000
----	----------------

*Results are sample-specific. Please refer to your local assay conditions and test parameters for reference.

PRODUCT OVERVIEW

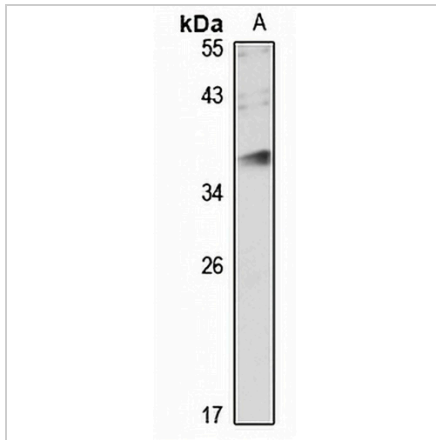
Description	Rabbit polyclonal antibody to JAM3
Specificity	Recognizes endogenous levels of JAM3 protein
Antibody Type	Primary antibody
Immunogen	KLH-conjugated synthetic peptide of human JAM3. The exact sequence is proprietary.
Purification	The antibody was purified by immunogen affinity chromatography.
Molecular Weight	Predicted: 29; Observed: 37 kD
Form/Buffer	Liquid in 0.42% Potassium phosphate, 0.87% Sodium chloride, pH 7.3, 30% glycerol, and 0.01% sodium azide.
Alternative Names	Junctional adhesion molecule C; JAM-C; JAM-2; Junctional adhesion molecule 3; JAM-3
Gene Symbol	JAM3
Entrez Gene	83700(Human); 83964(Mouse); 315509(Rat)
SwissProt	Q9BX67(Human); Q9D8B7(Mouse); Q68FQ2(Rat)

*AREX continuously optimizes our products. Webpage content may not reflect the latest updates. For inquiries, please contact info@arexbio.com or your local distributor.

*Clone Number, Reactivity, Source/Host and Clonality can be found in the product name and Key Features section above.

DATASHEET**JAM3 Rabbit Polyclonal Antibody**

CAT. NO. APA15947

DATA

Western blot analysis of JAM3 expression in HeLa (A) whole cell lysates. (Predicted band size: 29; 35 kD; Observed band size: 37 kD)

STORAGE

Store at 4°C short term. For long term storage, store at -20°C, avoiding freeze/thaw cycles.

NOTE

For Research Use Only. Not for diagnostic, therapeutics, prophylactic or in vivo use.