

DATASHEET

LysRS Rabbit Polyclonal Antibody

CAT. NO. APA15949

KEY FEATURES

| | | | |
|---------------|---|---------------|--------------------|
| Target | LysRS | Source / Host | Rabbit |
| Reactivity | Human, Mouse, Rat | Clonality | Polyclonal |
| Applications | WB, IF/ICC | Conjugation | Unconjugated |
| Form / Buffer | Liquid in 0.42% Potassium phosphate, 0.87% Sodium chloride, pH 7.3, 30% glycerol, and 0.01% sodium azide. | | Storage at-20°C |

BACKGROUND

Catalyzes the specific attachment of an amino acid to its cognate tRNA in a 2 step reaction: the amino acid (AA) is first activated by ATP to form AA-AMP and then transferred to the acceptor end of the tRNA is first activated by ATP to form AA-AMP and then transferred to the acceptor end of the tRNA . When secreted, acts as a signaling molecule that induces immune response through the activation of monocyte/macrophages . Catalyzes the synthesis of the signaling molecule diadenosine tetraphosphate (Ap4A), and thereby mediates disruption of the complex between HINT1 and MITF and the concomitant activation of MITF transcriptional activity .

APPLICATION

To ensure optimal assay performance, AREX recommends conducting reagent titration tailored to each testing system for optimal detection results.

| | |
|--------|----------------|
| WB | 1:500 - 1:2000 |
| IF/ICC | 1:50 - 1:200 |

*Results are sample-specific. Please refer to your local assay conditions and test parameters for reference.

PRODUCT OVERVIEW

| | |
|-------------------|---|
| Description | Rabbit polyclonal antibody to LysRS |
| Specificity | Recognizes endogenous levels of LysRS protein |
| Antibody Type | Primary antibody |
| Immunogen | Recombinant fusion protein of human LysRS. The exact sequence is proprietary. |
| Purification | The antibody was purified by immunogen affinity chromatography. |
| Molecular Weight | Predicted: 68; Observed: 75 kD |
| Form/Buffer | Liquid in 0.42% Potassium phosphate, 0.87% Sodium chloride, pH 7.3, 30% glycerol, and 0.01% sodium azide. |
| Alternative Names | KIAA0070; Lysine--tRNA ligase; Lysyl-tRNA synthetase; LysRS |
| Gene Symbol | KARS |
| Entrez Gene | 3735(Human); 85305(Mouse) |
| SwissProt | Q15046(Human); Q99MN1(Mouse) |

*AREX continuously optimizes our products. Webpage content may not reflect the latest updates. For inquiries, please contact info@arexbio.com or your local distributor.

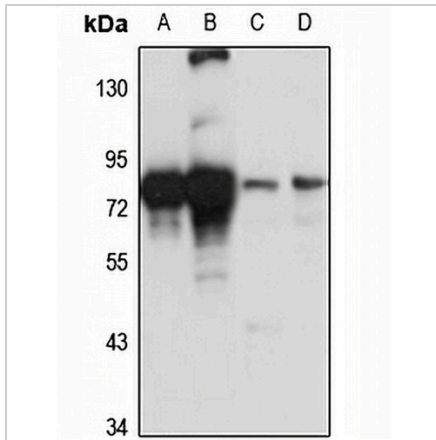
*Clone Number, Reactivity, Source/Host and Clonality can be found in the product name and Key Features section above.

DATASHEET

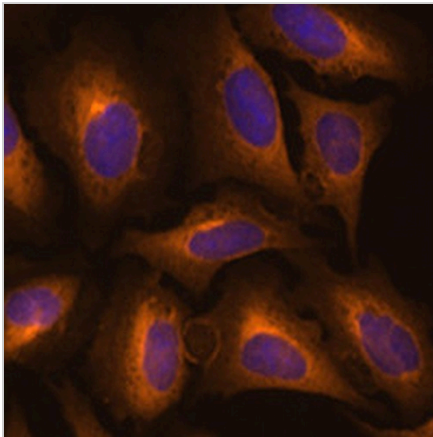
LysRS Rabbit Polyclonal Antibody

CAT. NO. APA15949

DATA



Western blot analysis of LysRS expression in Jurkat (A), HeLa (B), mouse kidney (C), rat liver (D) whole cell lysates. (Predicted band size: 68; 71 kD; Observed band size: 75 kD)



Immunofluorescent analysis of LysRS staining in U2OS cells. Formalin-fixed cells were permeabilized with 0.1% Triton X-100 in TBS for 5-10 minutes and blocked with 3% BSA-PBS for 30 minutes at room temperature. Cells were probed with the primary antibody in 3% BSA-PBS and incubated overnight at 4 °C in a humidified chamber. Cells were washed with PBST and incubated with a AREX® Fluor 594-conjugated secondary antibody (red) in PBS at room temperature in the dark. DAPI was used to stain the cell nuclei (blue).

STORAGE

Store at 4°C short term. For long term storage, store at -20°C, avoiding freeze/thaw cycles.

NOTE

For Research Use Only. Not for diagnostic, therapeutics, prophylactic or in vivo use.