

DATASHEET

KAT8 Rabbit Polyclonal Antibody

CAT. NO. APA15951

KEY FEATURES

Target	KAT8	Source / Host	Rabbit
Reactivity	Human, Mouse, Rat	Clonality	Polyclonal
Applications	WB	Conjugation	Unconjugated
Form / Buffer	Liquid in 0.42% Potassium phosphate, 0.87% Sodium chloride, pH 7.3, 30% glycerol, and 0.01% sodium azide.		Storage at -20°C

BACKGROUND

Histone acetyltransferase that catalyzes histone H4 acetylation at 'Lys-5' and 'Lys-8' (H4K5ac and H4K8ac) or 'Lys-16' (H4K16ac), depending on the context or 'Lys-16' (H4K16ac), depending on the context. Catalytic component of the MSL histone acetyltransferase complex, a multiprotein complex that mediates the majority of histone H4 acetylation at 'Lys-16' (H4K16ac), an epigenetic mark that prevents chromatin compaction. H4K16ac constitutes the only acetylation mark intergenerationally transmitted and regulates key biological processes, such as oogenesis, embryonic stem cell pluripotency, hematopoiesis or glucose metabolism. The MSL complex is required for chromosome stability and genome integrity by maintaining homeostatic levels of H4K16ac.

APPLICATION

To ensure optimal assay performance, AREX recommends conducting reagent titration tailored to each testing system for optimal detection results.

WB	1:500 - 1:1000
----	----------------

*Results are sample-specific. Please refer to your local assay conditions and test parameters for reference.

PRODUCT OVERVIEW

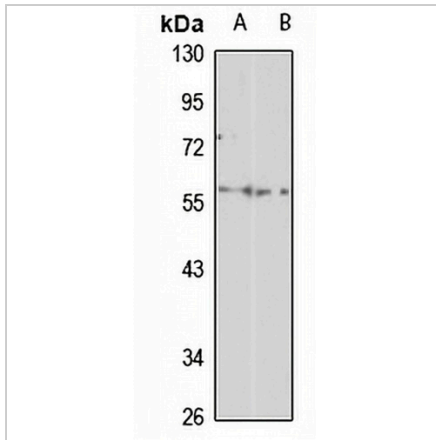
Description	Rabbit polyclonal antibody to KAT8
Specificity	Recognizes endogenous levels of KAT8 protein
Antibody Type	Primary antibody
Immunogen	Recombinant fusion protein of human KAT8. The exact sequence is proprietary.
Purification	The antibody was purified by immunogen affinity chromatography.
Molecular Weight	Predicted: 52; Observed: 53 kD
Form/Buffer	Liquid in 0.42% Potassium phosphate, 0.87% Sodium chloride, pH 7.3, 30% glycerol, and 0.01% sodium azide.
Alternative Names	MOF; MYST1; Histone acetyltransferase KAT8; Lysine acetyltransferase 8; MOZ YBF2/SAS3 SAS2 and TIP60 protein 1; MYST-1; hMOF
Gene Symbol	KAT8
Entrez Gene	84148(Human); 67773(Mouse)
SwissProt	Q9H7Z6(Human); Q9D1P2(Mouse)

*AREX continuously optimizes our products. Webpage content may not reflect the latest updates. For inquiries, please contact info@arex.bio or your local distributor.

*Clone Number, Reactivity, Source/Host and Clonality can be found in the product name and Key Features section above.

DATASHEET**KAT8 Rabbit Polyclonal Antibody**

CAT. NO. APA15951

DATA

Western blot analysis of KAT8 expression in OVCAR3 (A), NIH3T3 (B) whole cell lysates.
(Predicted band size: 52; 53 kD; Observed band size: 53 kD)

STORAGE

Store at 4°C short term. For long term storage, store at -20°C, avoiding freeze/thaw cycles.

NOTE

For Research Use Only. Not for diagnostic, therapeutics, prophylactic or in vivo use.