

DATASHEET

Kv-beta-1 Rabbit Polyclonal Antibody

CAT. NO. APA15954

KEY FEATURES

Target	Kv-beta-1	Source / Host	Rabbit
Reactivity	Human, Mouse, Rat	Clonality	Polyclonal
Applications	WB	Conjugation	Unconjugated
Form / Buffer	Liquid in 0.42% Potassium phosphate, 0.87% Sodium chloride, pH 7.3, 30% glycerol, and 0.01% sodium azide.		Storage at -20°C

BACKGROUND

Regulatory subunit of the voltage-gated potassium (Kv) Shaker channels composed of pore-forming and potassium-conducting alpha subunits and of regulatory beta subunits. Shaker channels composed of pore-forming and potassium-conducting alpha subunits and of regulatory beta subunits. The beta-1/KCNAB1 cytoplasmic subunit mediates closure of delayed rectifier potassium channels by physically obstructing the pore via its N-terminal domain and increases the speed of channel closure for other family members. Promotes the inactivation of Kv1.1/KCNA1, Kv1.2/KCNA2, Kv1.4/KCNA4, Kv1.5/KCNA5 and Kv1.6/KCNA6 alpha subunit-containing channels.

APPLICATION

To ensure optimal assay performance, AREX recommends conducting reagent titration tailored to each testing system for optimal detection results.

WB	1:500 - 1:2000
----	----------------

*Results are sample-specific. Please refer to your local assay conditions and test parameters for reference.

PRODUCT OVERVIEW

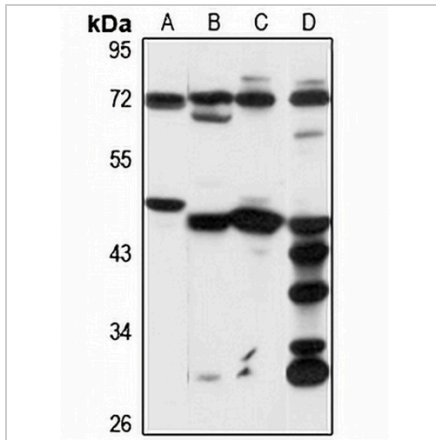
Description	Rabbit polyclonal antibody to Kv-beta-1
Specificity	Recognizes endogenous levels of Kv-beta-1 protein
Antibody Type	Primary antibody
Immunogen	Recombinant fusion protein of human Kv-beta-1. The exact sequence is proprietary.
Purification	The antibody was purified by immunogen affinity chromatography.
Molecular Weight	Predicted: 44; Observed: 45-50 kD
Form/Buffer	Liquid in 0.42% Potassium phosphate, 0.87% Sodium chloride, pH 7.3, 30% glycerol, and 0.01% sodium azide.
Alternative Names	KCNA1B; Voltage-gated potassium channel subunit beta-1; K(+) channel subunit beta-1; Kv-beta-1
Gene Symbol	KCNAB1
Entrez Gene	7881(Human); 16497(Mouse); 29737(Rat)
SwissProt	Q14722(Human); P63143(Mouse); P63144(Rat)

*AREX continuously optimizes our products. Webpage content may not reflect the latest updates. For inquiries, please contact info@arexbio.com or your local distributor.

*Clone Number, Reactivity, Source/Host and Clonality can be found in the product name and Key Features section above.

DATASHEET**Kv-beta-1 Rabbit Polyclonal Antibody**

CAT. NO. APA15954

DATA

Western blot analysis of Kv-beta-1 expression in HEK293T (A), mouse kidney (B), mouse heart (C), rat brain (D) whole cell lysates. (Predicted band size: 44; 45; 46 kD; Observed band size: 45-50 kD)

STORAGE

Store at 4°C short term. For long term storage, store at -20°C, avoiding freeze/thaw cycles.

NOTE

For Research Use Only. Not for diagnostic, therapeutics, prophylactic or in vivo use.