

DATASHEET

KCNE4 Rabbit Polyclonal Antibody

CAT. NO. APA15956

KEY FEATURES

Target	KCNE4	Source / Host	Rabbit
Reactivity	Human, Mouse	Clonality	Polyclonal
Applications	WB	Conjugation	Unconjugated
Form / Buffer	Liquid in 0.42% Potassium phosphate, 0.87% Sodium chloride, pH 7.3, 30% glycerol, and 0.01% sodium azide.		Storage at -20°C

BACKGROUND

Ancillary protein that functions as a regulatory subunit of the voltage-gated potassium (Kv) channel complex composed of pore-forming and potassium-conducting alpha subunits and of regulatory beta subunits. KCNE4 beta subunit modulates the gating kinetics and enhances stability of the channel complex channel complex composed of pore-forming and potassium-conducting alpha subunits and of regulatory beta subunits. KCNE4 beta subunit modulates the gating kinetics and enhances stability of the channel complex . Associates with KCNQ1/KVLQT1 alpha subunit to inhibit potassium currents .

APPLICATION

To ensure optimal assay performance, AREX recommends conducting reagent titration tailored to each testing system for optimal detection results.

WB	1:500 - 1:2000
----	----------------

*Results are sample-specific. Please refer to your local assay conditions and test parameters for reference.

PRODUCT OVERVIEW

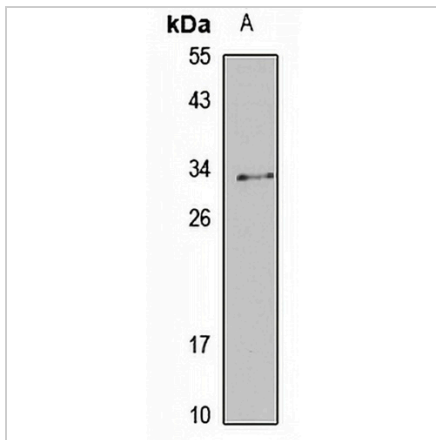
Description	Rabbit polyclonal antibody to KCNE4
Specificity	Recognizes endogenous levels of KCNE4 protein
Antibody Type	Primary antibody
Immunogen	Recombinant fusion protein of human KCNE4. The exact sequence is proprietary.
Purification	The antibody was purified by immunogen affinity chromatography.
Molecular Weight	Predicted: 23 kD; Observed: 30 kD
Form/Buffer	Liquid in 0.42% Potassium phosphate, 0.87% Sodium chloride, pH 7.3, 30% glycerol, and 0.01% sodium azide.
Alternative Names	Potassium voltage-gated channel subfamily E member 4; MinK-related peptide 3; Minimum potassium ion channel-related peptide 3; Potassium channel subunit beta MiRP3
Gene Symbol	KCNE4
Entrez Gene	23704(Human); 57814(Mouse)
SwissProt	Q8WWG9(Human); Q9WTW3(Mouse)

*AREX continuously optimizes our products. Webpage content may not reflect the latest updates. For inquiries, please contact info@arexbio.com or your local distributor.

*Clone Number, Reactivity, Source/Host and Clonality can be found in the product name and Key Features section above.

DATASHEET**KCNE4 Rabbit Polyclonal Antibody**

CAT. NO. APA15956

DATA

Western blot analysis of KCNE4 expression in LO2 (A) whole cell lysates. (Predicted band size: 23 kD; Observed band size: 30 kD)

STORAGE

Store at 4°C short term. For long term storage, store at -20°C, avoiding freeze/thaw cycles.

NOTE

For Research Use Only. Not for diagnostic, therapeutics, prophylactic or in vivo use.