

DATASHEET

Kir6.1 Rabbit Polyclonal Antibody

CAT. NO. APA15960

KEY FEATURES

Target	Kir6.1	Source / Host	Rabbit
Reactivity	Human, Mouse, Rat	Clonality	Polyclonal
Applications	WB	Conjugation	Unconjugated
Form / Buffer	Liquid in 0.42% Potassium phosphate, 0.87% Sodium chloride, pH 7.3, 30% glycerol, and 0.01% sodium azide.		Storage at -20°C

BACKGROUND

Inward rectifier potassium channels are characterized by a greater tendency to allow potassium to flow into the cell rather than out of it. Their voltage dependence is regulated by the concentration of extracellular potassium; as external potassium is raised, the voltage range of the channel opening shifts to more positive voltages. The inward rectification is mainly due to the blockage of outward current by internal magnesium. This channel is activated by internal ATP and can be blocked by external barium. Can form a sulfonylurea-sensitive but ATP-insensitive potassium channel with ABCC9.

APPLICATION

To ensure optimal assay performance, AREX recommends conducting reagent titration tailored to each testing system for optimal detection results.

WB	1:500 - 1:2000
----	----------------

*Results are sample-specific. Please refer to your local assay conditions and test parameters for reference.

PRODUCT OVERVIEW

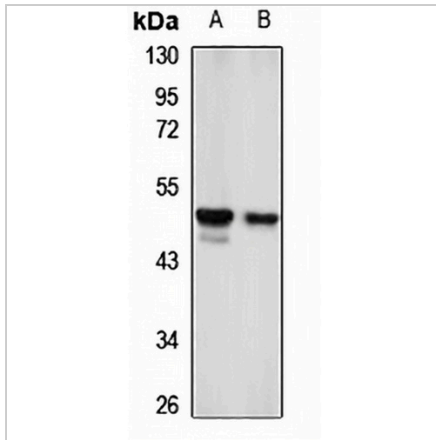
Description	Rabbit polyclonal antibody to Kir6.1
Specificity	Recognizes endogenous levels of Kir6.1 protein
Antibody Type	Primary antibody
Immunogen	Recombinant fusion protein of human Kir6.1. The exact sequence is proprietary.
Purification	The antibody was purified by immunogen affinity chromatography.
Molecular Weight	Predicted: 47 kD; Observed: 48 kD
Form/Buffer	Liquid in 0.42% Potassium phosphate, 0.87% Sodium chloride, pH 7.3, 30% glycerol, and 0.01% sodium azide.
Alternative Names	ATP-sensitive inward rectifier potassium channel 8; Inward rectifier K(+) channel Kir6.1; Potassium channel inwardly rectifying subfamily J member 8; uKATP-1
Gene Symbol	KCNJ8
Entrez Gene	3764(Human)
SwissProt	Q15842(Human)

*AREX continuously optimizes our products. Webpage content may not reflect the latest updates. For inquiries, please contact info@arexbio.com or your local distributor.

*Clone Number, Reactivity, Source/Host and Clonality can be found in the product name and Key Features section above.

DATASHEET**Kir6.1 Rabbit Polyclonal Antibody**

CAT. NO. APA15960

DATA

Western blot analysis of Kir6.1 expression in K562 (A), SW480 (B) whole cell lysates.
(Predicted band size: 47 kD; Observed band size: 48 kD)

STORAGE

Store at 4°C short term. For long term storage, store at -20°C, avoiding freeze/thaw cycles.

NOTE

For Research Use Only. Not for diagnostic, therapeutics, prophylactic or in vivo use.