

DATASHEET

TWIK2 Rabbit Polyclonal Antibody

CAT. NO. APA15961

KEY FEATURES

Target	TWIK2	Source / Host	Rabbit
Reactivity	Human, Mouse, Rat	Clonality	Polyclonal
Applications	WB	Conjugation	Unconjugated
Form / Buffer	Liquid in 0.42% Potassium phosphate, 0.87% Sodium chloride, pH 7.3, 30% glycerol, and 0.01% sodium azide.		Storage at-20°C

BACKGROUND

K(+) channel that conducts outward rectifying currents at the membranes of the endolysosomal system channel that conducts outward rectifying currents at the membranes of the endolysosomal system . Active in lysosomes where it regulates lysosome numbers and size . In macrophages, enables K(+) efflux coupled to ATP-induced NLRP3 inflammasome activation upon bacterial infection. Cooperates with ATP-gated P2RX7 channels to activate NLRP3 inflammasome, with P2RX7 conducting Ca(2+) and Na(+) influx that sets the membrane potential for K(+) efflux .

APPLICATION

To ensure optimal assay performance, AREX recommends conducting reagent titration tailored to each testing system for optimal detection results.

WB	1:500 - 1:2000
----	----------------

*Results are sample-specific. Please refer to your local assay conditions and test parameters for reference.

PRODUCT OVERVIEW

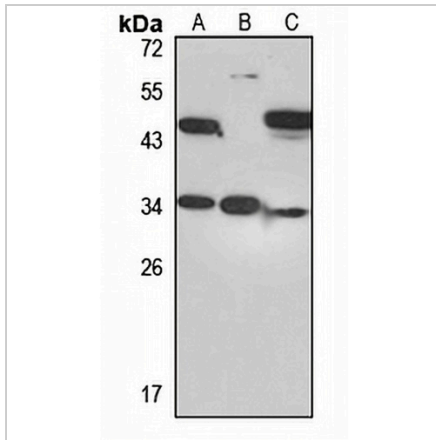
Description	Rabbit polyclonal antibody to TWIK2
Specificity	Recognizes endogenous levels of TWIK2 protein
Antibody Type	Primary antibody
Immunogen	Recombinant fusion protein of human TWIK2. The exact sequence is proprietary.
Purification	The antibody was purified by immunogen affinity chromatography.
Molecular Weight	Predicted: 19; Observed: 36 kD
Form/Buffer	Liquid in 0.42% Potassium phosphate, 0.87% Sodium chloride, pH 7.3, 30% glycerol, and 0.01% sodium azide.
Alternative Names	TOSS; TWIK2; Potassium channel subfamily K member 6; Inward rectifying potassium channel protein TWIK-2; TWIK-originated similarity sequence
Gene Symbol	KCNK6
Entrez Gene	9424(Human)
SwissProt	Q9Y257(Human)

*AREX continuously optimizes our products. Webpage content may not reflect the latest updates. For inquiries, please contact info@arexbio.com or your local distributor.

*Clone Number, Reactivity, Source/Host and Clonality can be found in the product name and Key Features section above.

DATASHEET**TWIK2 Rabbit Polyclonal Antibody**

CAT. NO. APA15961

DATA

Western blot analysis of TWIK2 expression in HT29 (A), K562 (B), mouse heart (C) whole cell lysates. (Predicted band size: 19; 33 kD; Observed band size: 36 kD)

STORAGE

Store at 4°C short term. For long term storage, store at -20°C, avoiding freeze/thaw cycles.

NOTE

For Research Use Only. Not for diagnostic, therapeutics, prophylactic or in vivo use.