

DATASHEET

KCNN1 Rabbit Polyclonal Antibody

CAT. NO. APA15963

KEY FEATURES

Target	KCNN1	Source / Host	Rabbit
Reactivity	Human, Mouse, Rat	Clonality	Polyclonal
Applications	WB	Conjugation	Unconjugated
Form / Buffer	Liquid in 0.42% Potassium phosphate, 0.87% Sodium chloride, pH 7.3, 30% glycerol, and 0.01% sodium azide.		Storage at -20°C

BACKGROUND

Small conductance calcium-activated potassium channel that mediates the voltage-independent transmembrane transfer of potassium across the cell membrane through a constitutive interaction with calmodulin which binds the intracellular calcium allowing its opening . The current is characterized by a voltage-independent activation, an intracellular calcium concentration increase-dependent activation and a single-channel conductance of about 3 picosiemens . Also presents an inwardly rectifying current, thus reducing its already small outward conductance of potassium ions, which is particularly the case when the membrane potential displays positive values, above + 20 mV (Probable). Activation is followed by membrane hyperpolarization .

APPLICATION

To ensure optimal assay performance, AREX recommends conducting reagent titration tailored to each testing system for optimal detection results.

WB	1:500 - 1:2000
----	----------------

*Results are sample-specific. Please refer to your local assay conditions and test parameters for reference.

PRODUCT OVERVIEW

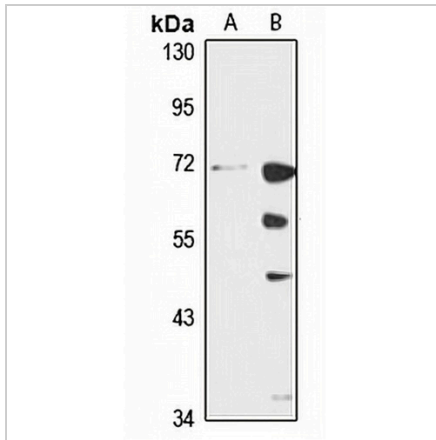
Description	Rabbit polyclonal antibody to KCNN1
Specificity	Recognizes endogenous levels of KCNN1 protein
Antibody Type	Primary antibody
Immunogen	Recombinant fusion protein of human KCNN1. The exact sequence is proprietary.
Purification	The antibody was purified by immunogen affinity chromatography.
Molecular Weight	Predicted: 59; Observed: 70 kD
Form/Buffer	Liquid in 0.42% Potassium phosphate, 0.87% Sodium chloride, pH 7.3, 30% glycerol, and 0.01% sodium azide.
Alternative Names	SK; Small conductance calcium-activated potassium channel protein 1; SK1; SKCa 1; SKCa1; KCa2.1
Gene Symbol	KCNN1
Entrez Gene	3780(Human); 84036(Mouse); 54261(Rat)
SwissProt	Q92952(Human); Q9EQR3(Mouse); P70606(Rat)

*AREX continuously optimizes our products. Webpage content may not reflect the latest updates. For inquiries, please contact info@arexbio.com or your local distributor.

*Clone Number, Reactivity, Source/Host and Clonality can be found in the product name and Key Features section above.

DATASHEET**KCNN1 Rabbit Polyclonal Antibody**

CAT. NO. APA15963

DATA

Western blot analysis of KCNN1 expression in Jurkat (A), mouse brain (B) whole cell lysates. (Predicted band size: 59; 61 kD; Observed band size: 70 kD)

STORAGE

Store at 4°C short term. For long term storage, store at -20°C, avoiding freeze/thaw cycles.

NOTE

For Research Use Only. Not for diagnostic, therapeutics, prophylactic or in vivo use.