

DATASHEET

KCTD10 Rabbit Polyclonal Antibody

CAT. NO. APA15964

KEY FEATURES

Target	KCTD10	Source / Host	Rabbit
Reactivity	Human, Mouse, Rat	Clonality	Polyclonal
Applications	WB	Conjugation	Unconjugated
Form / Buffer	Liquid in 0.42% Potassium phosphate, 0.87% Sodium chloride, pH 7.3, 30% glycerol, and 0.01% sodium azide.		Storage at -20°C

BACKGROUND

Substrate-specific adapter of a BCR (BTB-CUL3-RBX1) E3 ubiquitin-protein ligase complex. The BCR(BACURD3) E3 ubiquitin ligase complex mediates the ubiquitination of target proteins, leading to their degradation by the proteasome .

APPLICATION

To ensure optimal assay performance, AREX recommends conducting reagent titration tailored to each testing system for optimal detection results.

WB	1:500 - 1:2000
----	----------------

*Results are sample-specific. Please refer to your local assay conditions and test parameters for reference.

PRODUCT OVERVIEW

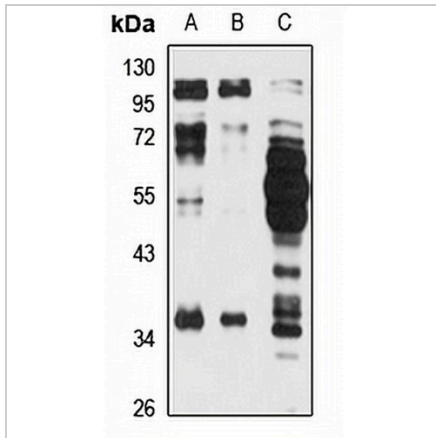
Description	Rabbit polyclonal antibody to KCTD10
Specificity	Recognizes endogenous levels of KCTD10 protein
Antibody Type	Primary antibody
Immunogen	Recombinant fusion protein of human KCTD10. The exact sequence is proprietary.
Purification	The antibody was purified by immunogen affinity chromatography.
Molecular Weight	Predicted: 17; Observed: 36 kD
Form/Buffer	Liquid in 0.42% Potassium phosphate, 0.87% Sodium chloride, pH 7.3, 30% glycerol, and 0.01% sodium azide.
Alternative Names	ULR061; BTB/POZ domain-containing adapter for CUL3-mediated RhoA degradation protein 3; hBACURD3; BTB/POZ domain-containing protein KCTD10; Potassium channel tetramerization domain-containing protein 10
Gene Symbol	KCTD10
Entrez Gene	83892(Human); 330171(Mouse); 494521(Rat)
SwissProt	Q9H3F6(Human); Q922M3(Mouse); Q7TPL3(Rat)

*AREX continuously optimizes our products. Webpage content may not reflect the latest updates. For inquiries, please contact info@arexbio.com or your local distributor.

*Clone Number, Reactivity, Source/Host and Clonality can be found in the product name and Key Features section above.

DATASHEET**KCTD10 Rabbit Polyclonal Antibody**

CAT. NO. APA15964

DATA

Western blot analysis of KCTD10 expression in HeLa (A), Jurkat (B), mouse brain (C) whole cell lysates. (Predicted band size: 17; 32; 35 kD; Observed band size: 36 kD)

STORAGE

Store at 4°C short term. For long term storage, store at -20°C, avoiding freeze/thaw cycles.

NOTE

For Research Use Only. Not for diagnostic, therapeutics, prophylactic or in vivo use.