

## DATASHEET

# KDM4B Rabbit Polyclonal Antibody

CAT. NO. APA15965

### KEY FEATURES

Target	KDM4B	Source / Host	Rabbit
Reactivity	Human, Mouse, Rat	Clonality	Polyclonal
Applications	WB	Conjugation	Unconjugated
Form / Buffer	Liquid in 0.42% Potassium phosphate, 0.87% Sodium chloride, pH 7.3, 30% glycerol, and 0.01% sodium azide.		Storage at -20°C

### BACKGROUND

Histone demethylase that specifically demethylates 'Lys-9' of histone H3, thereby playing a role in histone code. Does not demethylate histone H3 'Lys-4', H3 'Lys-27', H3 'Lys-36' nor H4 'Lys-20'. Only able to demethylate trimethylated H3 'Lys-9', with a weaker activity than KDM4A, KDM4C and KDM4D. Demethylation of Lys residue generates formaldehyde and succinate. Plays a critical role in the development of the central nervous system (CNS).

### APPLICATION

To ensure optimal assay performance, AREX recommends conducting reagent titration tailored to each testing system for optimal detection results.

WB	1:500 - 1:1000
----	----------------

\*Results are sample-specific. Please refer to your local assay conditions and test parameters for reference.

### PRODUCT OVERVIEW

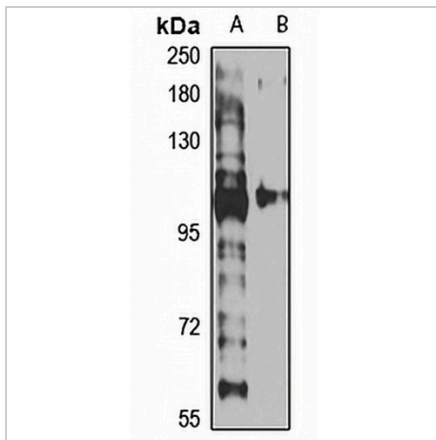
Description	Rabbit polyclonal antibody to KDM4B
Specificity	Recognizes endogenous levels of KDM4B protein
Antibody Type	Primary antibody
Immunogen	Recombinant fusion protein of human KDM4B. The exact sequence is proprietary.
Purification	The antibody was purified by immunogen affinity chromatography.
Molecular Weight	Predicted: 50; Observed: 150 kD
Form/Buffer	Liquid in 0.42% Potassium phosphate, 0.87% Sodium chloride, pH 7.3, 30% glycerol, and 0.01% sodium azide.
Alternative Names	JHDM3B; JMJD2B; KIAA0876; Lysine-specific demethylase 4B; JmjC domain-containing histone demethylation protein 3B; Jumonji domain-containing protein 2B
Gene Symbol	KDM4B
Entrez Gene	23030(Human); 193796(Mouse)
SwissProt	O94953(Human); Q91VY5(Mouse)

\*AREX continuously optimizes our products. Webpage content may not reflect the latest updates. For inquiries, please contact [info@arexbio.com](mailto:info@arexbio.com) or your local distributor.

\*Clone Number, Reactivity, Source/Host and Clonality can be found in the product name and Key Features section above.

**DATASHEET****KDM4B Rabbit Polyclonal Antibody**

CAT. NO. APA15965

**DATA**

Western blot analysis of KDM4B expression in HEK293T (A), NIH3T3 (B) whole cell lysates.  
(Predicted band size: 50; 121 kD; Observed band size: 150 kD)

**STORAGE**

Store at 4°C short term. For long term storage, store at -20°C, avoiding freeze/thaw cycles.

**NOTE**

For Research Use Only. Not for diagnostic, therapeutics, prophylactic or in vivo use.