

DATASHEET

KIF19 Rabbit Polyclonal Antibody

CAT. NO. APA15974

KEY FEATURES

Target	KIF19	Source / Host	Rabbit
Reactivity	Human, Mouse, Rat	Clonality	Polyclonal
Applications	WB	Conjugation	Unconjugated
Form / Buffer	Liquid in 0.42% Potassium phosphate, 0.87% Sodium chloride, pH 7.3, 30% glycerol, and 0.01% sodium azide.		Storage at -20°C

BACKGROUND

Plus end-directed microtubule-dependent motor protein that regulates the length of motile cilia by mediating depolymerization of microtubules at ciliary tips.

APPLICATION

To ensure optimal assay performance, AREX recommends conducting reagent titration tailored to each testing system for optimal detection results.

WB	1:500 - 1:2000
----	----------------

*Results are sample-specific. Please refer to your local assay conditions and test parameters for reference.

PRODUCT OVERVIEW

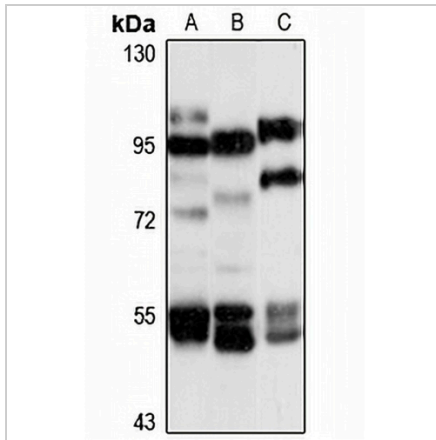
Description	Rabbit polyclonal antibody to KIF19
Specificity	Recognizes endogenous levels of KIF19 protein
Antibody Type	Primary antibody
Immunogen	Recombinant fusion protein of human KIF19. The exact sequence is proprietary.
Purification	The antibody was purified by immunogen affinity chromatography.
Molecular Weight	Predicted: 57; Observed: 111 kD
Form/Buffer	Liquid in 0.42% Potassium phosphate, 0.87% Sodium chloride, pH 7.3, 30% glycerol, and 0.01% sodium azide.
Alternative Names	Kinesin-like protein KIF19
Gene Symbol	KIF19
Entrez Gene	124602(Human); 286942(Mouse)
SwissProt	Q2TAC6(Human); Q99PT9(Mouse)

*AREX continuously optimizes our products. Webpage content may not reflect the latest updates. For inquiries, please contact info@arexbio.com or your local distributor.

*Clone Number, Reactivity, Source/Host and Clonality can be found in the product name and Key Features section above.

DATASHEET**KIF19 Rabbit Polyclonal Antibody**

CAT. NO. APA15974

DATA**STORAGE**

Store at 4°C short term. For long term storage, store at -20°C, avoiding freeze/thaw cycles.

NOTE

For Research Use Only. Not for diagnostic, therapeutics, prophylactic or in vivo use.