

DATASHEET

KIF22 Rabbit Polyclonal Antibody

CAT. NO. APA15977

KEY FEATURES

Target	KIF22	Source / Host	Rabbit
Reactivity	Human, Mouse	Clonality	Polyclonal
Applications	WB, IHC	Conjugation	Unconjugated
Form / Buffer	Liquid in 0.42% Potassium phosphate, 0.87% Sodium chloride, pH 7.3, 30% glycerol, and 0.01% sodium azide.		Storage at -20°C

BACKGROUND

Kinesin family member that is involved in spindle formation and the movements of chromosomes during mitosis and meiosis. Binds to microtubules and to DNA . Plays a role in congression of laterally attached chromosomes in NDC80-depleted cells .

APPLICATION

To ensure optimal assay performance, AREX recommends conducting reagent titration tailored to each testing system for optimal detection results.

WB	1:500 - 1:2000
IHC	1:50 - 1:200

*Results are sample-specific. Please refer to your local assay conditions and test parameters for reference.

PRODUCT OVERVIEW

Description	Rabbit polyclonal antibody to KIF22
Specificity	Recognizes endogenous levels of KIF22 protein
Antibody Type	Primary antibody
Immunogen	Recombinant fusion protein of human KIF22. The exact sequence is proprietary.
Purification	The antibody was purified by immunogen affinity chromatography.
Molecular Weight	Predicted: 66; Observed: 73 kD
Form/Buffer	Liquid in 0.42% Potassium phosphate, 0.87% Sodium chloride, pH 7.3, 30% glycerol, and 0.01% sodium azide.
Alternative Names	KID; KNXL4; Kinesin-like protein KIF22; Kinesin-like DNA-binding protein; Kinesin-like protein 4
Gene Symbol	KIF22
Entrez Gene	3835(Human); 110033(Mouse)
SwissProt	Q14807(Human); Q3V300(Mouse)

*AREX continuously optimizes our products. Webpage content may not reflect the latest updates. For inquiries, please contact info@arexbio.com or your local distributor.

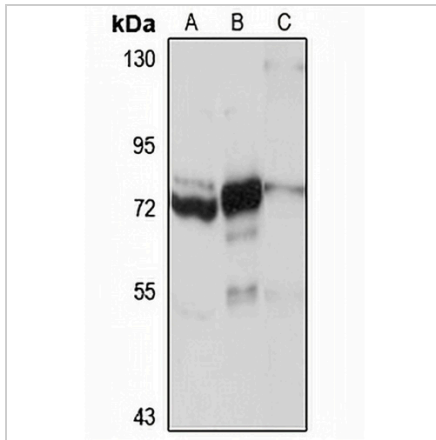
*Clone Number, Reactivity, Source/Host and Clonality can be found in the product name and Key Features section above.

DATASHEET

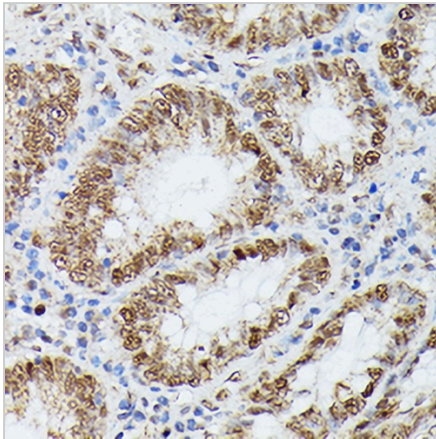
KIF22 Rabbit Polyclonal Antibody

CAT. NO. APA15977

DATA



Western blot analysis of KIF22 expression in A549 (A), HeLa (B), mouse testis (C) whole cell lysates. (Predicted band size: 66; 73 kD; Observed band size: 73 kD)



Immunohistochemical analysis of KIF22 staining in human colon formalin fixed paraffin embedded tissue section. The section was pre-treated using heat mediated antigen retrieval with sodium citrate buffer (pH 6.0). The section was then incubated with the antibody at room temperature and detected using an HRP conjugated compact polymer system. DAB was used as the chromogen. The section was then counterstained with haematoxylin and mounted with DPX.

STORAGE

Store at 4°C short term. For long term storage, store at -20°C, avoiding freeze/thaw cycles.

NOTE

For Research Use Only. Not for diagnostic, therapeutics, prophylactic or in vivo use.