

**DATASHEET**

**MKLP1 Rabbit Polyclonal Antibody**

CAT. NO. APA15978

**KEY FEATURES**

Target	MKLP1	Source / Host	Rabbit
Reactivity	Human	Clonality	Polyclonal
Applications	WB	Conjugation	Unconjugated
Form / Buffer	Liquid in 0.42% Potassium phosphate, 0.87% Sodium chloride, pH 7.3, 30% glycerol, and 0.01% sodium azide.		Storage at -20°C

**BACKGROUND**

Component of the centralspindlin complex that serves as a microtubule-dependent and Rho-mediated signaling required for the myosin contractile ring formation during the cell cycle cytokinesis. Essential for cytokinesis in Rho-mediated signaling. Required for the localization of ECT2 to the central spindle. Plus-end-directed motor enzyme that moves antiparallel microtubules in vitro.

**APPLICATION**

To ensure optimal assay performance, AREX recommends conducting reagent titration tailored to each testing system for optimal detection results.

WB	1:500 - 1:1000
----	----------------

\*Results are sample-specific. Please refer to your local assay conditions and test parameters for reference.

**PRODUCT OVERVIEW**

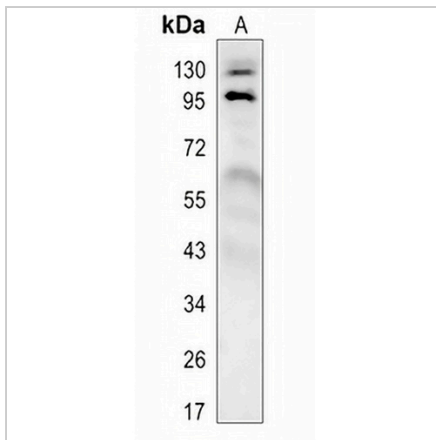
Description	Rabbit polyclonal antibody to MKLP1
Specificity	Recognizes endogenous levels of MKLP1 protein
Antibody Type	Primary antibody
Immunogen	Recombinant fusion protein of human MKLP1. The exact sequence is proprietary.
Purification	The antibody was purified by immunogen affinity chromatography.
Molecular Weight	Predicted: 77; Observed: 98 kD
Form/Buffer	Liquid in 0.42% Potassium phosphate, 0.87% Sodium chloride, pH 7.3, 30% glycerol, and 0.01% sodium azide.
Alternative Names	KNSL5; MKLP1; Kinesin-like protein KIF23; Kinesin-like protein 5; Mitotic kinesin-like protein 1
Gene Symbol	KIF23
Entrez Gene	9493(Human); 71819(Mouse)
SwissProt	Q02241(Human); E9Q5G3(Mouse)

\*AREX continuously optimizes our products. Webpage content may not reflect the latest updates. For inquiries, please contact [info@arexbio.com](mailto:info@arexbio.com) or your local distributor.

\*Clone Number, Reactivity, Source/Host and Clonality can be found in the product name and Key Features section above.

**DATASHEET****MKLP1 Rabbit Polyclonal Antibody**

CAT. NO. APA15978

**DATA**

Western blot analysis of MKLP1 expression in HeLa (A) whole cell lysates. (Predicted band size: 77; 98; 110 kD; Observed band size: 98 kD)

**STORAGE**

Store at 4°C short term. For long term storage, store at -20°C, avoiding freeze/thaw cycles.

**NOTE**

For Research Use Only. Not for diagnostic, therapeutics, prophylactic or in vivo use.