

**DATASHEET**

**KIF3B Rabbit Polyclonal Antibody**

CAT. NO. APA15979

**KEY FEATURES**

Target	KIF3B	Source / Host	Rabbit
Reactivity	Human, Mouse, Rat	Clonality	Polyclonal
Applications	WB	Conjugation	Unconjugated
Form / Buffer	Liquid in 0.42% Potassium phosphate, 0.87% Sodium chloride, pH 7.3, 30% glycerol, and 0.01% sodium azide.		Storage at -20°C

**BACKGROUND**

Microtubule-based molecular motor that transport intracellular cargos, such as vesicles, organelles and protein complexes. Uses ATP hydrolysis to generate force to bind and move along the microtubule . Plays a role in cilia formation . Involved in photoreceptor integrity and opsin trafficking in rod photoreceptors . Transports vesicles containing N-methyl-D-aspartate (NMDA) receptor subunit GRIN2A into neuronal dendrites .

**APPLICATION**

To ensure optimal assay performance, AREX recommends conducting reagent titration tailored to each testing system for optimal detection results.

WB	1:500 - 1:2000
----	----------------

\*Results are sample-specific. Please refer to your local assay conditions and test parameters for reference.

**PRODUCT OVERVIEW**

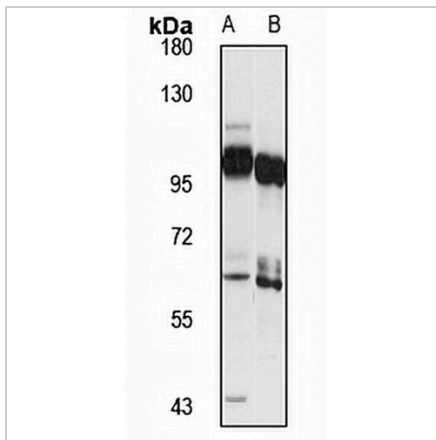
Description	Rabbit polyclonal antibody to KIF3B
Specificity	Recognizes endogenous levels of KIF3B protein
Antibody Type	Primary antibody
Immunogen	Recombinant fusion protein of human KIF3B. The exact sequence is proprietary.
Purification	The antibody was purified by immunogen affinity chromatography.
Molecular Weight	Predicted: 43; Observed: 100 kD
Form/Buffer	Liquid in 0.42% Potassium phosphate, 0.87% Sodium chloride, pH 7.3, 30% glycerol, and 0.01% sodium azide.
Alternative Names	KIAA0359; Kinesin-like protein KIF3B; HH0048; Microtubule plus end-directed kinesin motor 3B
Gene Symbol	KIF3B
Entrez Gene	9371(Human); 16569(Mouse)
SwissProt	O15066(Human); Q61771(Mouse)

\*AREX continuously optimizes our products. Webpage content may not reflect the latest updates. For inquiries, please contact [info@arexbio.com](mailto:info@arexbio.com) or your local distributor.

\*Clone Number, Reactivity, Source/Host and Clonality can be found in the product name and Key Features section above.

**DATASHEET****KIF3B Rabbit Polyclonal Antibody**

CAT. NO. APA15979

**DATA**

Western blot analysis of KIF3B expression in mouse brain (A), rat testis (B) whole cell lysates. (Predicted band size: 43; 85 kD; Observed band size: 100 kD)

**STORAGE**

Store at 4°C short term. For long term storage, store at -20°C, avoiding freeze/thaw cycles.

**NOTE**

For Research Use Only. Not for diagnostic, therapeutics, prophylactic or in vivo use.