

## DATASHEET

# KIF5C Rabbit Polyclonal Antibody

CAT. NO. APA15981

### KEY FEATURES

Target	KIF5C	Source / Host	Rabbit
Reactivity	Human, Mouse	Clonality	Polyclonal
Applications	WB	Conjugation	Unconjugated
Form / Buffer	Liquid in 0.42% Potassium phosphate, 0.87% Sodium chloride, pH 7.3, 30% glycerol, and 0.01% sodium azide.		Storage at-20°C

### BACKGROUND

Microtubule-associated force-producing protein that may play a role in organelle transport. Has ATPase activity . Involved in synaptic transmission . Mediates dendritic trafficking of mRNAs . Required for anterograde axonal transportation of MAPK8IP3/JIP3 which is essential for MAPK8IP3/JIP3 function in axon elongation .

### APPLICATION

To ensure optimal assay performance, AREX recommends conducting reagent titration tailored to each testing system for optimal detection results.

WB	1:500 - 1:2000
----	----------------

\*Results are sample-specific. Please refer to your local assay conditions and test parameters for reference.

### PRODUCT OVERVIEW

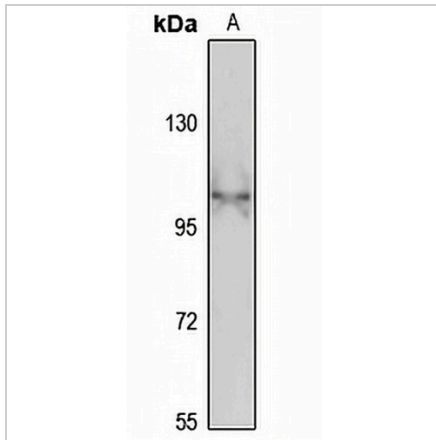
Description	Rabbit polyclonal antibody to KIF5C
Specificity	Recognizes endogenous levels of KIF5C protein
Antibody Type	Primary antibody
Immunogen	Recombinant fusion protein of human KIF5C. The exact sequence is proprietary.
Purification	The antibody was purified by immunogen affinity chromatography.
Molecular Weight	Predicted: 83; Observed: 109 kD
Form/Buffer	Liquid in 0.42% Potassium phosphate, 0.87% Sodium chloride, pH 7.3, 30% glycerol, and 0.01% sodium azide.
Alternative Names	KIAA0531; NKHC2; Kinesin heavy chain isoform 5C; Kinesin heavy chain neuron-specific 2
Gene Symbol	KIF5C
Entrez Gene	3800(Human); 16574(Mouse)
SwissProt	O60282(Human); P28738(Mouse)

\*AREX continuously optimizes our products. Webpage content may not reflect the latest updates. For inquiries, please contact [info@arexbio.com](mailto:info@arexbio.com) or your local distributor.

\*Clone Number, Reactivity, Source/Host and Clonality can be found in the product name and Key Features section above.

**DATASHEET****KIF5C Rabbit Polyclonal Antibody**

CAT. NO. APA15981

**DATA**

Western blot analysis of KIF5C expression in OVCAR3 (A) whole cell lysates. (Predicted band size: 83; 109 kD; Observed band size: 109 kD)

**STORAGE**

Store at 4°C short term. For long term storage, store at -20°C, avoiding freeze/thaw cycles.

**NOTE**

For Research Use Only. Not for diagnostic, therapeutics, prophylactic or in vivo use.