

## DATASHEET

# KIF6 Rabbit Polyclonal Antibody

CAT. NO. APA15982

### KEY FEATURES

Target	KIF6	Source / Host	Rabbit
Reactivity	Human, Mouse	Clonality	Polyclonal
Applications	WB	Conjugation	Unconjugated
Form / Buffer	Liquid in 0.42% Potassium phosphate, 0.87% Sodium chloride, pH 7.3, 30% glycerol, and 0.01% sodium azide.		Storage at -20°C

### BACKGROUND

This gene encodes a member of a family of molecular motors which are involved in intracellular transport of protein complexes, membrane organelles, and messenger ribonucleic acid along microtubules. Kinesins function as homodimeric molecules with two N-terminal head domains that move along microtubules and two C-terminal tail domains that interact with the transported cargo, either directly or indirectly, through adapter molecules. This gene is ubiquitously expressed in coronary arteries and other vascular tissue. A naturally occurring mutation in this gene is associated with coronary heart disease.

### APPLICATION

To ensure optimal assay performance, AREX recommends conducting reagent titration tailored to each testing system for optimal detection results.

WB	1:500 - 1:2000
----	----------------

\*Results are sample-specific. Please refer to your local assay conditions and test parameters for reference.

### PRODUCT OVERVIEW

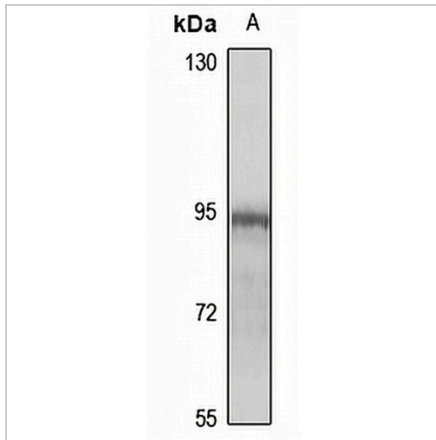
Description	Rabbit polyclonal antibody to KIF6
Specificity	Recognizes endogenous levels of KIF6 protein
Antibody Type	Primary antibody
Immunogen	Recombinant fusion protein of human KIF6. The exact sequence is proprietary.
Purification	The antibody was purified by immunogen affinity chromatography.
Molecular Weight	Predicted: 19; Observed: 93 kD
Form/Buffer	Liquid in 0.42% Potassium phosphate, 0.87% Sodium chloride, pH 7.3, 30% glycerol, and 0.01% sodium azide.
Alternative Names	C6orf102; Kinesin-like protein KIF6
Gene Symbol	KIF6
Entrez Gene	221458(Human)
SwissProt	Q6ZMV9(Human)

\*AREX continuously optimizes our products. Webpage content may not reflect the latest updates. For inquiries, please contact [info@arexbio.com](mailto:info@arexbio.com) or your local distributor.

\*Clone Number, Reactivity, Source/Host and Clonality can be found in the product name and Key Features section above.

**DATASHEET****KIF6 Rabbit Polyclonal Antibody**

CAT. NO. APA15982

**DATA**

Western blot analysis of KIF6 expression in mouse testis (A) whole cell lysates. (Predicted band size: 19; 30; 90; 92 kD; Observed band size: 93 kD)

**STORAGE**

Store at 4°C short term. For long term storage, store at -20°C, avoiding freeze/thaw cycles.

**NOTE**

For Research Use Only. Not for diagnostic, therapeutics, prophylactic or in vivo use.