

## DATASHEET

# KIN17 Rabbit Polyclonal Antibody

CAT. NO. APA15984

### KEY FEATURES

Target	KIN17	Source / Host	Rabbit
Reactivity	Human, Mouse, Rat	Clonality	Polyclonal
Applications	WB	Conjugation	Unconjugated
Form / Buffer	Liquid in 0.42% Potassium phosphate, 0.87% Sodium chloride, pH 7.3, 30% glycerol, and 0.01% sodium azide.		Storage at -20°C

### BACKGROUND

Involved in DNA replication and the cellular response to DNA damage. May participate in DNA replication factories and create a bridge between DNA replication and repair mediated by high molecular weight complexes. May play a role in illegitimate recombination and regulation of gene expression. May participate in mRNA processing. Binds, in vitro, to double-stranded DNA. Also shown to bind preferentially to curved DNA in vitro and in vivo. Binds via its C-terminal domain to RNA in vitro.

### APPLICATION

To ensure optimal assay performance, AREX recommends conducting reagent titration tailored to each testing system for optimal detection results.

WB	1:500 - 1:2000
----	----------------

\*Results are sample-specific. Please refer to your local assay conditions and test parameters for reference.

### PRODUCT OVERVIEW

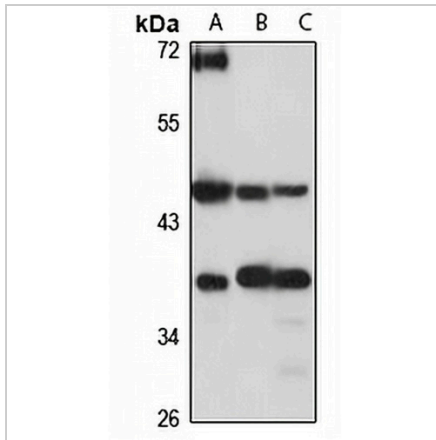
Description	Rabbit polyclonal antibody to KIN17
Specificity	Recognizes endogenous levels of KIN17 protein
Antibody Type	Primary antibody
Immunogen	Recombinant fusion protein of human KIN17. The exact sequence is proprietary.
Purification	The antibody was purified by immunogen affinity chromatography.
Molecular Weight	Predicted: 43; Observed: 45 kD
Form/Buffer	Liquid in 0.42% Potassium phosphate, 0.87% Sodium chloride, pH 7.3, 30% glycerol, and 0.01% sodium azide.
Alternative Names	BTCD; KIN17; DNA/RNA-binding protein KIN17; Binding to curved DNA; KIN antigenic determinant of recA protein homolog
Gene Symbol	KIN
Entrez Gene	22944(Human); 16588(Mouse)
SwissProt	O60870(Human); Q8K339(Mouse)

\*AREX continuously optimizes our products. Webpage content may not reflect the latest updates. For inquiries, please contact [info@arexbio.com](mailto:info@arexbio.com) or your local distributor.

\*Clone Number, Reactivity, Source/Host and Clonality can be found in the product name and Key Features section above.

**DATASHEET****KIN17 Rabbit Polyclonal Antibody**

CAT. NO. APA15984

**DATA**

Western blot analysis of KIN17 expression in HeLa (A), mouse testis (B), rat thymus (C) whole cell lysates. (Predicted band size: 43; 45 kD; Observed band size: 45 kD)

**STORAGE**

Store at 4°C short term. For long term storage, store at -20°C, avoiding freeze/thaw cycles.

**NOTE**

For Research Use Only. Not for diagnostic, therapeutics, prophylactic or in vivo use.