

DATASHEET

CD158d Rabbit Polyclonal Antibody

CAT. NO. APA15986

KEY FEATURES

Target	CD158d	Source / Host	Rabbit
Reactivity	Human, Mouse, Rat	Clonality	Polyclonal
Applications	WB	Conjugation	Unconjugated
Form / Buffer	Liquid in 0.42% Potassium phosphate, 0.87% Sodium chloride, pH 7.3, 30% glycerol, and 0.01% sodium azide.		Storage at -20°C

BACKGROUND

Receptor for non-classical major histocompatibility class Ib HLA-G molecules. Recognizes HLA-G in complex with B2M/beta-2 microglobulin and a nonamer self-peptide (peptide-bound HLA-G-B2M). In decidual NK cells, binds peptide-bound HLA-G-B2M complex and triggers NK cell senescence-associated secretory phenotype as a molecular switch to promote vascular remodeling and fetal growth in early pregnancy . In decidual NK cells, binds peptide-bound HLA-G-B2M complex and triggers NK cell senescence-associated secretory phenotype as a molecular switch to promote vascular remodeling and fetal growth in early pregnancy . May play a role in balancing tolerance and antiviral-immunity at maternal-fetal interface by keeping in check the effector functions of NK, CD8+ T cells and B cells .

APPLICATION

To ensure optimal assay performance, AREX recommends conducting reagent titration tailored to each testing system for optimal detection results.

WB	1:500 - 1:2000
----	----------------

*Results are sample-specific. Please refer to your local assay conditions and test parameters for reference.

PRODUCT OVERVIEW

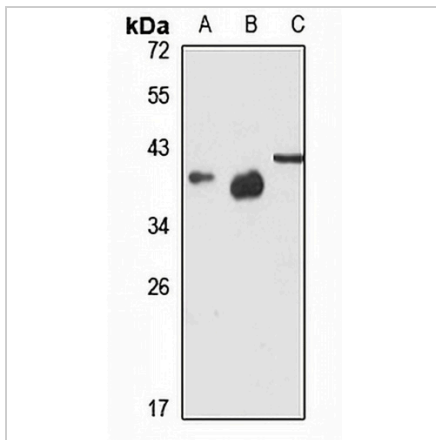
Description	Rabbit polyclonal antibody to CD158d
Specificity	Recognizes endogenous levels of CD158d protein
Antibody Type	Primary antibody
Immunogen	Recombinant fusion protein of human CD158d. The exact sequence is proprietary.
Purification	The antibody was purified by immunogen affinity chromatography.
Molecular Weight	Predicted: 24; Observed: 39; 41 kD
Form/Buffer	Liquid in 0.42% Potassium phosphate, 0.87% Sodium chloride, pH 7.3, 30% glycerol, and 0.01% sodium azide.
Alternative Names	CD158D; KIR103AS; Killer cell immunoglobulin-like receptor 2DL4; CD158 antigen-like family member D; G9P; Killer cell inhibitory receptor 103AS; KIR-103AS; MHC class I NK cell receptor KIR103AS; CD158d
Gene Symbol	KIR2DL4
Entrez Gene	3805(Human)
SwissProt	Q99706(Human)

*AREX continuously optimizes our products. Webpage content may not reflect the latest updates. For inquiries, please contact info@arexbio.com or your local distributor.

*Clone Number, Reactivity, Source/Host and Clonality can be found in the product name and Key Features section above.

DATASHEET**CD158d Rabbit Polyclonal Antibody**

CAT. NO. APA15986

DATA**STORAGE**

Store at 4°C short term. For long term storage, store at -20°C, avoiding freeze/thaw cycles.

NOTE

For Research Use Only. Not for diagnostic, therapeutics, prophylactic or in vivo use.