

DATASHEET

Kisspeptin-1 Rabbit Polyclonal Antibody

CAT. NO. APA15987

KEY FEATURES

Target	Kisspeptin-1	Source / Host	Rabbit
Reactivity	Human, Mouse	Clonality	Polyclonal
Applications	WB, IHC	Conjugation	Unconjugated
Form / Buffer	Liquid in 0.42% Potassium phosphate, 0.87% Sodium chloride, pH 7.3, 30% glycerol, and 0.01% sodium azide.		Storage at-20°C

BACKGROUND

Kisspeptins are ligands for the G-protein coupled receptor KISS1R/GPR54 . The hypothalamic KISS1/KISS1R signaling system plays a central role in the regulation of the hypothalamic-pituitary-gonadal reproductive axis by modulating the secretion of gonadotropin-releasing hormone (GnRH) from GnRH neurons . In these neurons, kisspeptin binding to its receptor activates G(q)-dependent signaling, leading to phospholipase C (PLC) activation, and hydrolysis of phosphatidylinositol 4,5-bisphosphate (PIP2) . The subsequent rise in intracellular calcium levels results in the inhibition of inward rectifier potassium channels and activation of TRPC-like cation channels, leading to GnRH neurons depolarization and stimulation .

APPLICATION

To ensure optimal assay performance, AREX recommends conducting reagent titration tailored to each testing system for optimal detection results.

WB	1:500 - 1:2000
IHC	1:50 - 1:200

*Results are sample-specific. Please refer to your local assay conditions and test parameters for reference.

PRODUCT OVERVIEW

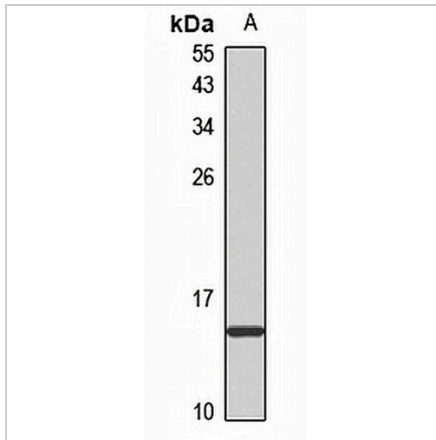
Description	Rabbit polyclonal antibody to Kisspeptin-1
Specificity	Recognizes endogenous levels of Kisspeptin-1 protein
Antibody Type	Primary antibody
Immunogen	KLH-conjugated synthetic peptide of human Kisspeptin-1. The exact sequence is proprietary.
Purification	The antibody was purified by immunogen affinity chromatography.
Molecular Weight	Predicted: 14 kD; Observed: 15 kD
Form/Buffer	Liquid in 0.42% Potassium phosphate, 0.87% Sodium chloride, pH 7.3, 30% glycerol, and 0.01% sodium azide.
Alternative Names	Metastasis-suppressor KiSS-1; Kisspeptin-1
Gene Symbol	KISS1
Entrez Gene	3814(Human); 280287(Mouse)
SwissProt	Q15726(Human); Q6Y4S4(Mouse)

*AREX continuously optimizes our products. Webpage content may not reflect the latest updates. For inquiries, please contact info@arexbio.com or your local distributor.

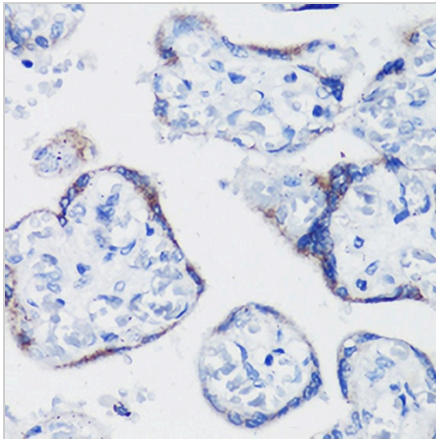
*Clone Number, Reactivity, Source/Host and Clonality can be found in the product name and Key Features section above.

DATASHEET**Kisspeptin-1 Rabbit Polyclonal Antibody**

CAT. NO. APA15987

DATA

Western blot analysis of Kisspeptin-1 expression in mouse brain (A) whole cell lysates. (Predicted band size: 14 kD; Observed band size: 15 kD)



Immunohistochemical analysis of Kisspeptin-1 staining in human placenta formalin fixed paraffin embedded tissue section. The section was pre-treated using heat mediated antigen retrieval with sodium citrate buffer (pH 6.0). The section was then incubated with the antibody at room temperature and detected using an HRP conjugated compact polymer system. DAB was used as the chromogen. The section was then counterstained with haematoxylin and mounted with DPX.

STORAGE

Store at 4°C short term. For long term storage, store at -20°C, avoiding freeze/thaw cycles.

NOTE

For Research Use Only. Not for diagnostic, therapeutics, prophylactic or in vivo use.