

DATASHEET

BetaKlotho Rabbit Polyclonal Antibody

CAT. NO. APA15989

KEY FEATURES

Target	BetaKlotho	Source / Host	Rabbit
Reactivity	Human, Mouse, Rat	Clonality	Polyclonal
Applications	WB	Conjugation	Unconjugated
Form / Buffer	Liquid in 0.42% Potassium phosphate, 0.87% Sodium chloride, pH 7.3, 30% glycerol, and 0.01% sodium azide.	Storage	at-20°C

BACKGROUND

Contributes to the transcriptional repression of cholesterol 7-alpha-hydroxylase (CYP7A1), the rate-limiting enzyme in bile acid synthesis. Probably inactive as a glycosidase. Increases the ability of FGFR1 and FGFR4 to bind FGF21 .

APPLICATION

To ensure optimal assay performance, AREX recommends conducting reagent titration tailored to each testing system for optimal detection results.

WB	1:500 - 1:2000
----	----------------

*Results are sample-specific. Please refer to your local assay conditions and test parameters for reference.

PRODUCT OVERVIEW

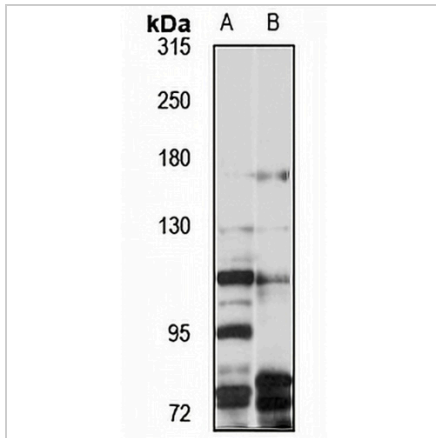
Description	Rabbit polyclonal antibody to BetaKlotho
Specificity	Recognizes endogenous levels of BetaKlotho protein
Antibody Type	Primary antibody
Immunogen	Recombinant fusion protein of human BetaKlotho. The exact sequence is proprietary.
Purification	The antibody was purified by immunogen affinity chromatography.
Molecular Weight	Predicted: 119 kD; Observed: 120 kD
Form/Buffer	Liquid in 0.42% Potassium phosphate, 0.87% Sodium chloride, pH 7.3, 30% glycerol, and 0.01% sodium azide.
Alternative Names	Beta-klotho; BKL; BetaKlotho; Klotho beta-like protein
Gene Symbol	KLB
Entrez Gene	152831(Human); 83379(Mouse)
SwissProt	Q86Z14(Human); Q99N32(Mouse)

*AREX continuously optimizes our products. Webpage content may not reflect the latest updates. For inquiries, please contact info@arexbio.com or your local distributor.

*Clone Number, Reactivity, Source/Host and Clonality can be found in the product name and Key Features section above.

DATASHEET**BetaKlotho Rabbit Polyclonal Antibody**

CAT. NO. APA15989

DATA

Western blot analysis of BetaKlotho expression in SGC7901 (A), rat liver (B) whole cell lysates. (Predicted band size: 119 kD; Observed band size: 120 kD)

STORAGE

Store at 4°C short term. For long term storage, store at -20°C, avoiding freeze/thaw cycles.

NOTE

For Research Use Only. Not for diagnostic, therapeutics, prophylactic or in vivo use.