

DATASHEET

KLF6 Rabbit Polyclonal Antibody

CAT. NO. APA15994

KEY FEATURES

Target	KLF6	Source / Host	Rabbit
Reactivity	Human, Rat	Clonality	Polyclonal
Applications	WB, IHC, IF/ICC	Conjugation	Unconjugated
Form / Buffer	Liquid in 0.42% Potassium phosphate, 0.87% Sodium chloride, pH 7.3, 30% glycerol, and 0.01% sodium azide.		Storage at-20°C

BACKGROUND

Transcriptional activator . Binds a GC box motif. Could play a role in B-cell growth and development.

APPLICATION

To ensure optimal assay performance, AREX recommends conducting reagent titration tailored to each testing system for optimal detection results.

WB	1:500 - 1:2000
IHC	1:50 - 1:200
IF/ICC	1:50 - 1:200

*Results are sample-specific. Please refer to your local assay conditions and test parameters for reference.

PRODUCT OVERVIEW

Description	Rabbit polyclonal antibody to KLF6
Specificity	Recognizes endogenous levels of KLF6 protein
Antibody Type	Primary antibody
Immunogen	Recombinant fusion protein of human KLF6. The exact sequence is proprietary.
Purification	The antibody was purified by immunogen affinity chromatography.
Molecular Weight	Predicted: 26; Observed: 45 kD
Form/Buffer	Liquid in 0.42% Potassium phosphate, 0.87% Sodium chloride, pH 7.3, 30% glycerol, and 0.01% sodium azide.
Alternative Names	BCD1; COPEB; CPBP; ST12; Krueppel-like factor 6; B-cell-derived protein 1; Core promoter element-binding protein; GC-rich sites-binding factor GBF; Proto-oncogene BCD1; Suppressor of tumorigenicity 12 protein; Transcription factor Zf9
Gene Symbol	KLF6
Entrez Gene	1316(Human)
SwissProt	Q99612(Human)

*AREX continuously optimizes our products. Webpage content may not reflect the latest updates. For inquiries, please contact info@arexbio.com or your local distributor.

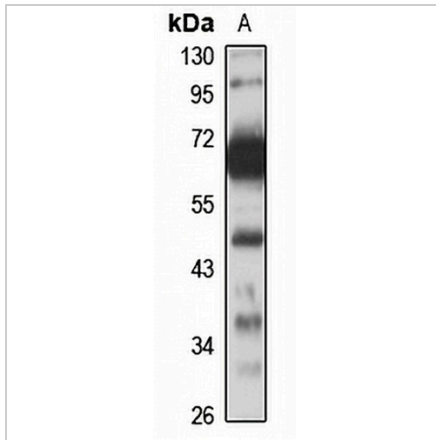
*Clone Number, Reactivity, Source/Host and Clonality can be found in the product name and Key Features section above.

DATASHEET

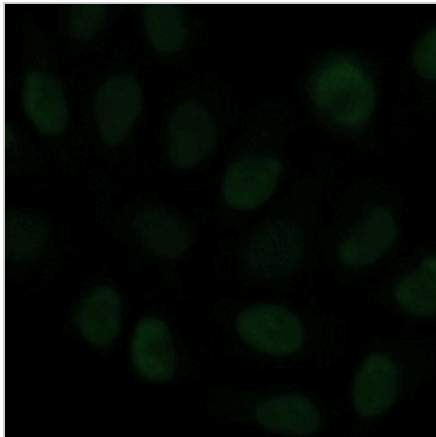
KLF6 Rabbit Polyclonal Antibody

CAT. NO. APA15994

DATA



Western blot analysis of KLF6 expression in PC3 (A) whole cell lysates. (Predicted band size: 26; 30; 31 kD; Observed band size: 45 kD)



Immunofluorescent analysis of KLF6 staining in HeLa cells. Formalin-fixed cells were permeabilized with 0.1% Triton X-100 in TBS for 5-10 minutes and blocked with 3% BSA-PBS for 30 minutes at room temperature. Cells were probed with the primary antibody in 3% BSA-PBS and incubated overnight at 4 °C in a humidified chamber. Cells were washed with PBST and incubated with a Alexa Fluor 594-conjugated secondary antibody (red) in PBS at room temperature in the dark.

STORAGE

Store at 4°C short term. For long term storage, store at -20°C, avoiding freeze/thaw cycles.

NOTE

For Research Use Only. Not for diagnostic, therapeutics, prophylactic or in vivo use.