

**DATASHEET**

**KLF7 Rabbit Polyclonal Antibody**

CAT. NO. APA15995

**KEY FEATURES**

Target	KLF7	Source / Host	Rabbit
Reactivity	Human, Mouse	Clonality	Polyclonal
Applications	WB	Conjugation	Unconjugated
Form / Buffer	Liquid in 0.42% Potassium phosphate, 0.87% Sodium chloride, pH 7.3, 30% glycerol, and 0.01% sodium azide.		Storage at -20°C

**BACKGROUND**

Transcriptional factor . Plays a critical role in neuronal morphogenesis and survival of sensory neurons . Represses the corneal epithelium differentiation . Also acts as a metabolic regulator, by modulating insulin sensitivity in pancreatic beta cells and skeletal muscle cells . Inhibits transcriptional inducers of adipogenesis and has a repressive role in the expression of several adipokines, including leptin .

**APPLICATION**

To ensure optimal assay performance, AREX recommends conducting reagent titration tailored to each testing system for optimal detection results.

WB	1:500 - 1:2000
----	----------------

\*Results are sample-specific. Please refer to your local assay conditions and test parameters for reference.

**PRODUCT OVERVIEW**

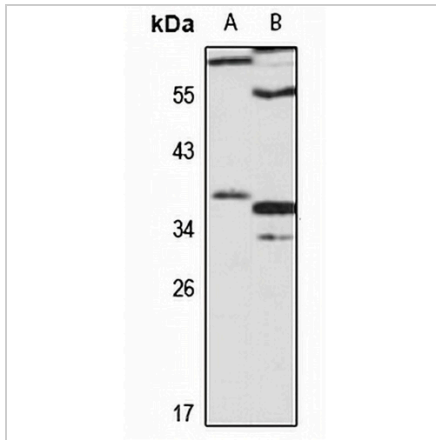
Description	Rabbit polyclonal antibody to KLF7
Specificity	Recognizes endogenous levels of KLF7 protein
Antibody Type	Primary antibody
Immunogen	Recombinant fusion protein of human KLF7. The exact sequence is proprietary.
Purification	The antibody was purified by immunogen affinity chromatography.
Molecular Weight	Predicted: 9; Observed: 37 kD
Form/Buffer	Liquid in 0.42% Potassium phosphate, 0.87% Sodium chloride, pH 7.3, 30% glycerol, and 0.01% sodium azide.
Alternative Names	UKLF; Krueppel-like factor 7; Ubiquitous krueppel-like factor
Gene Symbol	KLF7
Entrez Gene	8609(Human); 93691(Mouse)
SwissProt	O75840(Human); Q99JB0(Mouse)

\*AREX continuously optimizes our products. Webpage content may not reflect the latest updates. For inquiries, please contact [info@arexbio.com](mailto:info@arexbio.com) or your local distributor.

\*Clone Number, Reactivity, Source/Host and Clonality can be found in the product name and Key Features section above.

**DATASHEET****KLF7 Rabbit Polyclonal Antibody**

CAT. NO. APA15995

**DATA**

Western blot analysis of KLF7 expression in K562 (A), mouse kidney (B) whole cell lysates.  
(Predicted band size: 9; 13; 24; 29; 30; 33 kD; Observed band size: 37 kD)

**STORAGE**

Store at 4°C short term. For long term storage, store at -20°C, avoiding freeze/thaw cycles.

**NOTE**

For Research Use Only. Not for diagnostic, therapeutics, prophylactic or in vivo use.