

DATASHEET

Karyopherin beta-1 Rabbit Polyclonal Antibody

CAT. NO. APA16006

KEY FEATURES

Target	Karyopherin beta-1	Source / Host	Rabbit
Reactivity	Human, Mouse, Rat	Clonality	Polyclonal
Applications	WB, IHC, IF/ICC	Conjugation	Unconjugated
Form / Buffer	Liquid in 0.42% Potassium phosphate, 0.87% Sodium chloride, pH 7.3, 30% glycerol, and 0.01% sodium azide.		Storage at -20°C

BACKGROUND

Functions in nuclear protein import, either in association with an adapter protein, like an importin-alpha subunit, which binds to nuclear localization signals (NLS) in cargo substrates, or by acting as autonomous nuclear transport receptor in cargo substrates, or by acting as autonomous nuclear transport receptor . Acting autonomously, serves itself as NLS receptor . Docking of the importin/substrate complex to the nuclear pore complex (NPC) is mediated by KPNB1 through binding to nucleoporin FxFG repeats and the complex is subsequently translocated through the pore by an energy requiring, Ran-dependent mechanism .

APPLICATION

To ensure optimal assay performance, AREX recommends conducting reagent titration tailored to each testing system for optimal detection results.

WB	1:500 - 1:2000
IHC	1:50 - 1:200
IF/ICC	1:50 - 1:200

*Results are sample-specific. Please refer to your local assay conditions and test parameters for reference.

PRODUCT OVERVIEW

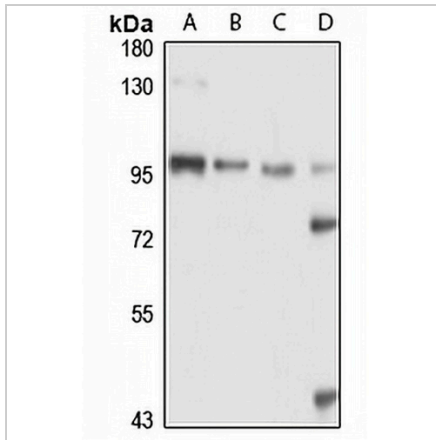
Description	Rabbit polyclonal antibody to Karyopherin beta-1
Specificity	Recognizes endogenous levels of Karyopherin beta-1 protein
Antibody Type	Primary antibody
Immunogen	KLH-conjugated synthetic peptide of human Karyopherin beta-1. The exact sequence is proprietary.
Purification	The antibody was purified by immunogen affinity chromatography.
Molecular Weight	Predicted: 81; Observed: 97 kD
Form/Buffer	Liquid in 0.42% Potassium phosphate, 0.87% Sodium chloride, pH 7.3, 30% glycerol, and 0.01% sodium azide.
Alternative Names	NTF97; Importin subunit beta-1; Importin-90; Karyopherin subunit beta-1; Nuclear factor p97; Pore targeting complex 97 kDa subunit; PTAC97
Gene Symbol	KPNB1
Entrez Gene	3837(Human); 16211(Mouse); 24917(Rat)
SwissProt	Q14974(Human); P70168(Mouse); P52296(Rat)

*AREX continuously optimizes our products. Webpage content may not reflect the latest updates. For inquiries, please contact info@arexbio.com or your local distributor.

*Clone Number, Reactivity, Source/Host and Clonality can be found in the product name and Key Features section above.

DATASHEET**Karyopherin beta-1 Rabbit Polyclonal Antibody**

CAT. NO. APA16006

DATA

Western blot analysis of Karyopherin beta-1 expression in HeLa (A), mouse lung (B), mouse brain (C), rat liver (D) whole cell lysates. (Predicted band size: 81; 97 kD; Observed band size: 97 kD)

STORAGE

Store at 4°C short term. For long term storage, store at -20°C, avoiding freeze/thaw cycles.

NOTE

For Research Use Only. Not for diagnostic, therapeutics, prophylactic or in vivo use.