

DATASHEET

KRBOX4 Rabbit Polyclonal Antibody

CAT. NO. APA16007

KEY FEATURES

Target	KRBOX4	Source / Host	Rabbit
Reactivity	Human, Mouse, Rat	Clonality	Polyclonal
Applications	WB	Conjugation	Unconjugated
Form / Buffer	Liquid in 0.42% Potassium phosphate, 0.87% Sodium chloride, pH 7.3, 30% glycerol, and 0.01% sodium azide.		Storage at -20°C

BACKGROUND

This encodes a zinc finger protein with an N-terminal KRAB (Kruppel-associated) domain found in transcriptional repressors. This gene is located in a region of the X chromosome thought to be involved in nonsyndromic X-linked cognitive disability. Multiple transcript variants encoding different isoforms have been found for this gene.

APPLICATION

To ensure optimal assay performance, AREX recommends conducting reagent titration tailored to each testing system for optimal detection results.

WB	1:500 - 1:2000
----	----------------

*Results are sample-specific. Please refer to your local assay conditions and test parameters for reference.

PRODUCT OVERVIEW

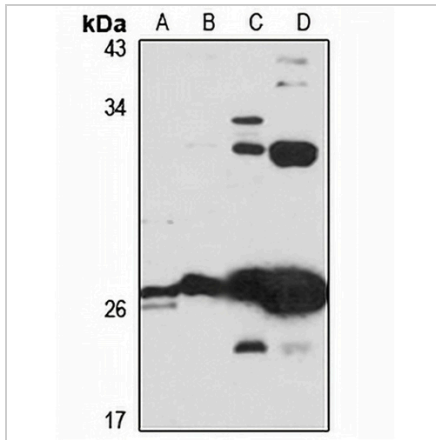
Description	Rabbit polyclonal antibody to KRBOX4
Specificity	Recognizes endogenous levels of KRBOX4 protein
Antibody Type	Primary antibody
Immunogen	KLH-conjugated synthetic peptide of human KRBOX4. The exact sequence is proprietary.
Purification	The antibody was purified by immunogen affinity chromatography.
Molecular Weight	Predicted: 11; Observed: 20 kD
Form/Buffer	Liquid in 0.42% Potassium phosphate, 0.87% Sodium chloride, pH 7.3, 30% glycerol, and 0.01% sodium azide.
Alternative Names	ZNF673; KRAB domain-containing protein 4; KRAB box domain-containing protein 4
Gene Symbol	KRBOX4
Entrez Gene	55634(Human)
SwissProt	Q5JUW0(Human)

*AREX continuously optimizes our products. Webpage content may not reflect the latest updates. For inquiries, please contact info@arexbio.com or your local distributor.

*Clone Number, Reactivity, Source/Host and Clonality can be found in the product name and Key Features section above.

DATASHEET**KRBOX4 Rabbit Polyclonal Antibody**

CAT. NO. APA16007

DATA

Western blot analysis of KRBOX4 expression in MCF7 (A), HT29 (B), mouse kidney (C), rat testis (D) whole cell lysates. (Predicted band size: 11; 19; 20 kD; Observed band size: 20 kD)

STORAGE

Store at 4°C short term. For long term storage, store at -20°C, avoiding freeze/thaw cycles.

NOTE

For Research Use Only. Not for diagnostic, therapeutics, prophylactic or in vivo use.