

DATASHEET

Cytokeratin 12 Rabbit Polyclonal Antibody

CAT. NO. APA16011

KEY FEATURES

Target	Cytokeratin 12	Source / Host	Rabbit
Reactivity	Human, Mouse, Rat	Clonality	Polyclonal
Applications	WB	Conjugation	Unconjugated
Form / Buffer	Liquid in 0.42% Potassium phosphate, 0.87% Sodium chloride, pH 7.3, 30% glycerol, and 0.01% sodium azide.	Storage	at-20°C

BACKGROUND

Involved in corneal epithelium organization, integrity and corneal keratin expression.

APPLICATION

To ensure optimal assay performance, AREX recommends conducting reagent titration tailored to each testing system for optimal detection results.

WB	1:500 - 1:2000
----	----------------

*Results are sample-specific. Please refer to your local assay conditions and test parameters for reference.

PRODUCT OVERVIEW

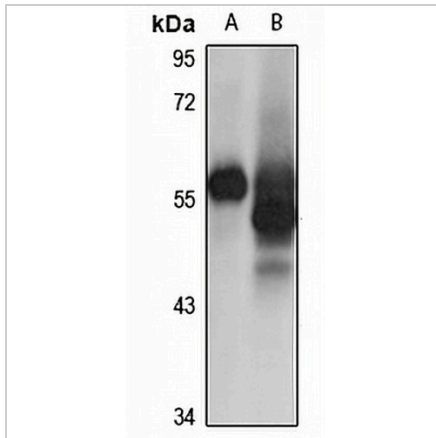
Description	Rabbit polyclonal antibody to Cytokeratin 12
Specificity	Recognizes endogenous levels of Cytokeratin 12 protein
Antibody Type	Primary antibody
Immunogen	KLH-conjugated synthetic peptide of human Cytokeratin 12. The exact sequence is proprietary.
Purification	The antibody was purified by immunogen affinity chromatography.
Molecular Weight	Predicted: 53 kD; Observed: 55 kD
Form/Buffer	Liquid in 0.42% Potassium phosphate, 0.87% Sodium chloride, pH 7.3, 30% glycerol, and 0.01% sodium azide.
Alternative Names	Keratin type I cytoskeletal 12; Cytokeratin-12; CK-12; Keratin-12; K12
Gene Symbol	KRT12
Entrez Gene	3859(Human); 360625(Rat)
SwissProt	Q99456(Human); Q64291(Mouse); Q6IFW5(Rat)

*AREX continuously optimizes our products. Webpage content may not reflect the latest updates. For inquiries, please contact info@arexbio.com or your local distributor.

*Clone Number, Reactivity, Source/Host and Clonality can be found in the product name and Key Features section above.

DATASHEET**Cytokeratin 12 Rabbit Polyclonal Antibody**

CAT. NO. APA16011

DATA

Western blot analysis of Cytokeratin 12 expression in mouse eye (A), rat brain (B) whole cell lysates. (Predicted band size: 53 kD; Observed band size: 55 kD)

STORAGE

Store at 4°C short term. For long term storage, store at -20°C, avoiding freeze/thaw cycles.

NOTE

For Research Use Only. Not for diagnostic, therapeutics, prophylactic or in vivo use.