

DATASHEET

Cytokeratin 36 Rabbit Polyclonal Antibody

CAT. NO. APA16013

KEY FEATURES

Target	Cytokeratin 36	Source / Host	Rabbit
Reactivity	Human, Mouse, Rat	Clonality	Polyclonal
Applications	WB, IHC	Conjugation	Unconjugated
Form / Buffer	Liquid in 0.42% Potassium phosphate, 0.87% Sodium chloride, pH 7.3, 30% glycerol, and 0.01% sodium azide.		Storage at -20°C

BACKGROUND

The protein encoded by this gene is a member of the keratin gene family. This type I hair keratin is an acidic protein which heterodimerizes with type II keratins to form hair and nails. The type I hair keratins are clustered in a region of chromosome 17q12-q21 and have the same direction of transcription.

APPLICATION

To ensure optimal assay performance, AREX recommends conducting reagent titration tailored to each testing system for optimal detection results.

WB	1:500 - 1:2000
IHC	1:50 - 1:200

*Results are sample-specific. Please refer to your local assay conditions and test parameters for reference.

PRODUCT OVERVIEW

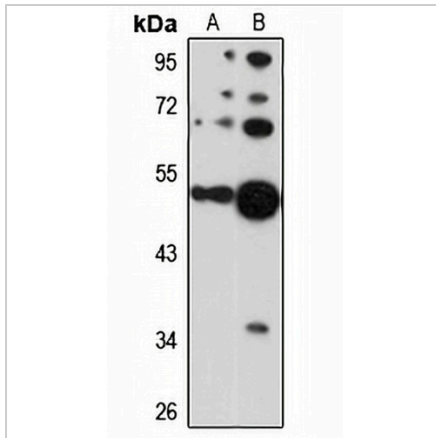
Description	Rabbit polyclonal antibody to Cytokeratin 36
Specificity	Recognizes endogenous levels of Cytokeratin 36 protein
Antibody Type	Primary antibody
Immunogen	Recombinant fusion protein of human Cytokeratin 36. The exact sequence is proprietary.
Purification	The antibody was purified by immunogen affinity chromatography.
Molecular Weight	Predicted: 47; Observed: 52 kD
Form/Buffer	Liquid in 0.42% Potassium phosphate, 0.87% Sodium chloride, pH 7.3, 30% glycerol, and 0.01% sodium azide.
Alternative Names	HHA6; HKA6; KRTHA6; Keratin type I cuticular Ha6; Hair keratin type I Ha6; Keratin-36; K36
Gene Symbol	KRT36
Entrez Gene	8689(Human); 16673(Mouse)
SwissProt	O76013(Human); B1AQ75(Mouse)

*AREX continuously optimizes our products. Webpage content may not reflect the latest updates. For inquiries, please contact info@arexbio.com or your local distributor.

*Clone Number, Reactivity, Source/Host and Clonality can be found in the product name and Key Features section above.

DATASHEET**Cytokeratin 36 Rabbit Polyclonal Antibody**

CAT. NO. APA16013

DATA

Western blot analysis of Cytokeratin 36 expression in HeLa (A), LO2 (B) whole cell lysates. (Predicted band size: 47; 52 kD; Observed band size: 52 kD)

STORAGE

Store at 4°C short term. For long term storage, store at -20°C, avoiding freeze/thaw cycles.

NOTE

For Research Use Only. Not for diagnostic, therapeutics, prophylactic or in vivo use.