

**DATASHEET**

**LAD1 Rabbit Polyclonal Antibody**

CAT. NO. APA16017

**KEY FEATURES**

Target	LAD1	Source / Host	Rabbit
Reactivity	Human	Clonality	Polyclonal
Applications	WB	Conjugation	Unconjugated
Form / Buffer	Liquid in 0.42% Potassium phosphate, 0.87% Sodium chloride, pH 7.3, 30% glycerol, and 0.01% sodium azide.		Storage at -20°C

**BACKGROUND**

Anchoring filament protein which is a component of the basement membrane zone.

**APPLICATION**

To ensure optimal assay performance, AREX recommends conducting reagent titration tailored to each testing system for optimal detection results.

WB	1:500 - 1:2000
----	----------------

\*Results are sample-specific. Please refer to your local assay conditions and test parameters for reference.

**PRODUCT OVERVIEW**

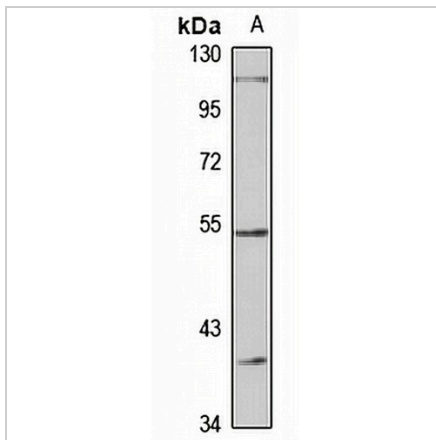
Description	Rabbit polyclonal antibody to LAD1
Specificity	Recognizes endogenous levels of LAD1 protein
Antibody Type	Primary antibody
Immunogen	Recombinant fusion protein of human LAD1. The exact sequence is proprietary.
Purification	The antibody was purified by immunogen affinity chromatography.
Molecular Weight	Predicted: 57 kD; Observed: 54 kD
Form/Buffer	Liquid in 0.42% Potassium phosphate, 0.87% Sodium chloride, pH 7.3, 30% glycerol, and 0.01% sodium azide.
Alternative Names	LAD; Ladinin-1; Lad-1; Linear IgA disease antigen; LADA
Gene Symbol	LAD1
Entrez Gene	3898(Human); 16763(Mouse)
SwissProt	O00515(Human); P57016(Mouse)

\*AREX continuously optimizes our products. Webpage content may not reflect the latest updates. For inquiries, please contact [info@arexbio.com](mailto:info@arexbio.com) or your local distributor.

\*Clone Number, Reactivity, Source/Host and Clonality can be found in the product name and Key Features section above.

**DATASHEET****LAD1 Rabbit Polyclonal Antibody**

CAT. NO. APA16017

**DATA**

Western blot analysis of LAD1 expression in HeLa (A) whole cell lysates. (Predicted band size: 57 kD; Observed band size: 54 kD)

**STORAGE**

Store at 4°C short term. For long term storage, store at -20°C, avoiding freeze/thaw cycles.

**NOTE**

For Research Use Only. Not for diagnostic, therapeutics, prophylactic or in vivo use.