

**DATASHEET**

**CLIM-1 Rabbit Polyclonal Antibody**

CAT. NO. APA16025

**KEY FEATURES**

Target	CLIM-1	Source / Host	Rabbit
Reactivity	Human, Mouse	Clonality	Polyclonal
Applications	WB, IHC	Conjugation	Unconjugated
Form / Buffer	Liquid in 0.42% Potassium phosphate, 0.87% Sodium chloride, pH 7.3, 30% glycerol, and 0.01% sodium azide.		Storage at -20°C

**BACKGROUND**

Transcription cofactor. Binds to the LIM domain of a wide variety of LIM domain-containing transcription factors.

**APPLICATION**

To ensure optimal assay performance, AREX recommends conducting reagent titration tailored to each testing system for optimal detection results.

WB	1:500 - 1:2000
IHC	1:50 - 1:200

\*Results are sample-specific. Please refer to your local assay conditions and test parameters for reference.

**PRODUCT OVERVIEW**

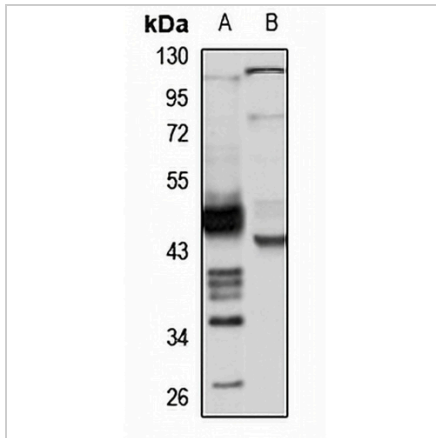
Description	Rabbit polyclonal antibody to CLIM-1
Specificity	Recognizes endogenous levels of CLIM-1 protein
Antibody Type	Primary antibody
Immunogen	Recombinant fusion protein of human CLIM-1. The exact sequence is proprietary.
Purification	The antibody was purified by immunogen affinity chromatography.
Molecular Weight	Predicted: 38; Observed: 43 kD
Form/Buffer	Liquid in 0.42% Potassium phosphate, 0.87% Sodium chloride, pH 7.3, 30% glycerol, and 0.01% sodium azide.
Alternative Names	CLIM1; LIM domain-binding protein 2; LDB-2; Carboxyl-terminal LIM domain-binding protein 1; CLIM-1; LIM domain-binding factor CLIM1
Gene Symbol	LDB2
Entrez Gene	9079(Human); 16826(Mouse)
SwissProt	O43679(Human); O55203(Mouse)

\*AREX continuously optimizes our products. Webpage content may not reflect the latest updates. For inquiries, please contact [info@arexbio.com](mailto:info@arexbio.com) or your local distributor.

\*Clone Number, Reactivity, Source/Host and Clonality can be found in the product name and Key Features section above.

**DATASHEET****CLIM-1 Rabbit Polyclonal Antibody**

CAT. NO. APA16025

**DATA**

Western blot analysis of CLIM-1 expression in Raji (A), mouse kidney (B) whole cell lysates.  
(Predicted band size: 38; 39; 42 kD; Observed band size: 43 kD)

**STORAGE**

Store at 4°C short term. For long term storage, store at -20°C, avoiding freeze/thaw cycles.

**NOTE**

For Research Use Only. Not for diagnostic, therapeutics, prophylactic or in vivo use.