

**DATASHEET**

**TCF1 alpha Rabbit Polyclonal Antibody**

CAT. NO. APA16028

**KEY FEATURES**

|               |   |               |                     |
|---------------|---|---------------|---------------------|
| Target        | TCF1 alpha  | Source / Host | Rabbit              |
| Reactivity    | Human, Mouse, Rat   | Clonality     | Polyclonal          |
| Applications  | WB  | Conjugation   | Unconjugated        |
| Form / Buffer | Liquid in 0.42% Potassium phosphate, 0.87% Sodium chloride, pH 7.3, 30% glycerol, and 0.01% sodium azide. |               | Storage<br>at -20°C |

**BACKGROUND**

Transcription factor that binds DNA in a sequence-specific manner . Participates in the Wnt signaling pathway . Activates transcription of target genes in the presence of CTNNB1 and EP300 . PIAG antagonizes both Wnt-dependent and Wnt-independent activation by LEF1 . TLE1, TLE2, TLE3 and TLE4 repress transactivation mediated by LEF1 and CTNNB1 . Regulates T-cell receptor alpha enhancer function . Required for IL17A expressing gamma-delta T-cell maturation and development, via binding to regulator loci of BLK to modulate expression . Acts as a positive regulator of odontoblast differentiation during mesenchymal tooth germ formation, expression is repressed during the bell stage by MSX1-mediated inhibition of CTNNB1 signaling .

**APPLICATION**

To ensure optimal assay performance, AREX recommends conducting reagent titration tailored to each testing system for optimal detection results.

|    |                |
|----|----------------|
| WB | 1:500 - 1:2000 |
|----|----------------|

\*Results are sample-specific. Please refer to your local assay conditions and test parameters for reference.

**PRODUCT OVERVIEW**

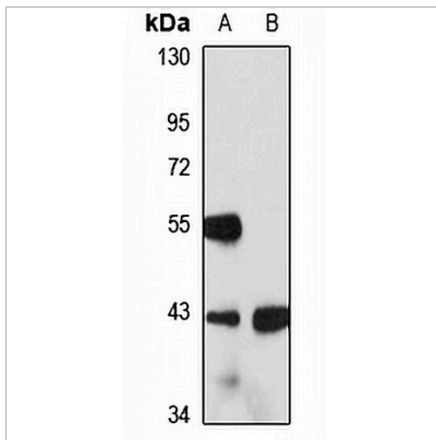
|                   |   |
|-------------------|---|
| Description       | Rabbit polyclonal antibody to TCF1 alpha  |
| Specificity       | Recognizes endogenous levels of TCF1 alpha protein  |
| Antibody Type     | Primary antibody  |
| Immunogen         | Recombinant fusion protein of human TCF1 alpha. The exact sequence is proprietary.                        |
| Purification      | The antibody was purified by immunogen affinity chromatography.   |
| Molecular Weight  | Predicted: 23; Observed: 43 kD  |
| Form/Buffer       | Liquid in 0.42% Potassium phosphate, 0.87% Sodium chloride, pH 7.3, 30% glycerol, and 0.01% sodium azide. |
| Alternative Names | Lymphoid enhancer-binding factor 1; LEF-1; T cell-specific transcription factor 1-alpha; TCF1-alpha       |
| Gene Symbol       | LEF1  |
| Entrez Gene       | 51176(Human); 16842(Mouse)  |
| SwissProt         | Q9UJU2(Human); P27782(Mouse)  |

\*AREX continuously optimizes our products. Webpage content may not reflect the latest updates. For inquiries, please contact [info@arexbio.com](mailto:info@arexbio.com) or your local distributor.

\*Clone Number, Reactivity, Source/Host and Clonality can be found in the product name and Key Features section above.

**DATASHEET****TCF1 alpha Rabbit Polyclonal Antibody**

CAT. NO. APA16028

**DATA**

Western blot analysis of TCF1 alpha expression in Jurkat (A), mouse kidney (B) whole cell lysates. (Predicted band size: 23; 31; 34; 35; 41; 42; 44 kD; Observed band size: 43 kD)

**STORAGE**

Store at 4°C short term. For long term storage, store at -20°C, avoiding freeze/thaw cycles.

**NOTE**

For Research Use Only. Not for diagnostic, therapeutics, prophylactic or in vivo use.