

DATASHEET

Lefty-2 Rabbit Polyclonal Antibody

CAT. NO. APA16030

KEY FEATURES

Target	Lefty-2	Source / Host	Rabbit
Reactivity	Human, Mouse, Rat	Clonality	Polyclonal
Applications	WB	Conjugation	Unconjugated
Form / Buffer	Liquid in 0.42% Potassium phosphate, 0.87% Sodium chloride, pH 7.3, 30% glycerol, and 0.01% sodium azide.	Storage	at-20°C

BACKGROUND

Required for left-right (L-R) asymmetry determination of organ systems in mammals. May play a role in endometrial bleeding.

APPLICATION

To ensure optimal assay performance, AREX recommends conducting reagent titration tailored to each testing system for optimal detection results.

WB	1:500 - 1:2000
----	----------------

*Results are sample-specific. Please refer to your local assay conditions and test parameters for reference.

PRODUCT OVERVIEW

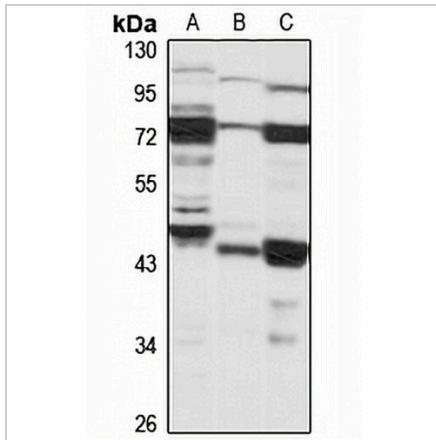
Description	Rabbit polyclonal antibody to Lefty-2
Specificity	Recognizes endogenous levels of Lefty-2 protein
Antibody Type	Primary antibody
Immunogen	Recombinant fusion protein of human Lefty-2. The exact sequence is proprietary.
Purification	The antibody was purified by immunogen affinity chromatography.
Molecular Weight	Predicted: 37; Observed: 41 kD
Form/Buffer	Liquid in 0.42% Potassium phosphate, 0.87% Sodium chloride, pH 7.3, 30% glycerol, and 0.01% sodium azide.
Alternative Names	EBAF; LEFTA; LEFTYA; TGFB4; Left-right determination factor 2; Endometrial bleeding-associated factor; Left-right determination factor A; Protein lefty-2; Protein lefty-A; Transforming growth factor beta-4; TGF-beta-4
Gene Symbol	LEFTY2
Entrez Gene	7044(Human); 320202(Mouse)
SwissProt	O00292(Human); P57785(Mouse)

*AREX continuously optimizes our products. Webpage content may not reflect the latest updates. For inquiries, please contact info@arexbio.com or your local distributor.

*Clone Number, Reactivity, Source/Host and Clonality can be found in the product name and Key Features section above.

DATASHEET**Lefty-2 Rabbit Polyclonal Antibody**

CAT. NO. APA16030

DATA

Western blot analysis of Lefty-2 expression in LO2 (A), mouse heart (B), rat liver (C) whole cell lysates. (Predicted band size: 37; 40 kD; Observed band size: 41 kD)

STORAGE

Store at 4°C short term. For long term storage, store at -20°C, avoiding freeze/thaw cycles.

NOTE

For Research Use Only. Not for diagnostic, therapeutics, prophylactic or in vivo use.