

DATASHEET

LENG8 Rabbit Polyclonal Antibody

CAT. NO. APA16031

KEY FEATURES

Target	LENG8	Source / Host	Rabbit
Reactivity	Human, Mouse, Rat	Clonality	Polyclonal
Applications	WB	Conjugation	Unconjugated
Form / Buffer	Liquid in 0.42% Potassium phosphate, 0.87% Sodium chloride, pH 7.3, 30% glycerol, and 0.01% sodium azide.		Storage at -20°C

BACKGROUND

Leukocyte receptor cluster member 8 (LENG8). Subunit: May be part of a SEM1-containing complex

APPLICATION

To ensure optimal assay performance, AREX recommends conducting reagent titration tailored to each testing system for optimal detection results.

WB	1:500 - 1:2000
----	----------------

*Results are sample-specific. Please refer to your local assay conditions and test parameters for reference.

PRODUCT OVERVIEW

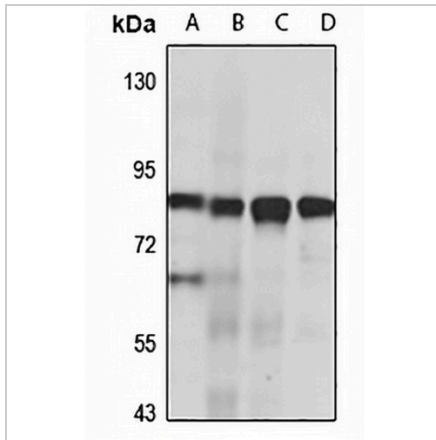
Description	Rabbit polyclonal antibody to LENG8
Specificity	Recognizes endogenous levels of LENG8 protein
Antibody Type	Primary antibody
Immunogen	Recombinant fusion protein of human LENG8. The exact sequence is proprietary.
Purification	The antibody was purified by immunogen affinity chromatography.
Molecular Weight	Predicted: 88 kD; Observed: 88 kD
Form/Buffer	Liquid in 0.42% Potassium phosphate, 0.87% Sodium chloride, pH 7.3, 30% glycerol, and 0.01% sodium azide.
Alternative Names	KIAA1932; Leukocyte receptor cluster member 8
Gene Symbol	LENG8
Entrez Gene	114823(Human); 232798(Mouse)
SwissProt	Q96PV6(Human); Q8CBY3(Mouse)

*AREX continuously optimizes our products. Webpage content may not reflect the latest updates. For inquiries, please contact info@arexbio.com or your local distributor.

*Clone Number, Reactivity, Source/Host and Clonality can be found in the product name and Key Features section above.

DATASHEET**LENG8 Rabbit Polyclonal Antibody**

CAT. NO. APA16031

DATA

Western blot analysis of LENG8 expression in Jurkat (A), mouse eye (B), rat kidney (C), rat brain (D) whole cell lysates. (Predicted band size: 88 kD; Observed band size: 88 kD)

STORAGE

Store at 4°C short term. For long term storage, store at -20°C, avoiding freeze/thaw cycles.

NOTE

For Research Use Only. Not for diagnostic, therapeutics, prophylactic or in vivo use.