

DATASHEET

Gros1 Rabbit Polyclonal Antibody

CAT. NO. APA16032

KEY FEATURES

Target	Gros1	Source / Host	Rabbit
Reactivity	Human, Mouse, Rat	Clonality	Polyclonal
Applications	WB	Conjugation	Unconjugated
Form / Buffer	Liquid in 0.42% Potassium phosphate, 0.87% Sodium chloride, pH 7.3, 30% glycerol, and 0.01% sodium azide.		Storage at-20°C

BACKGROUND

Basement membrane-associated chondroitin sulfate proteoglycan (CSPG). Has prolyl 3-hydroxylase activity catalyzing the post-translational formation of 3-hydroxyproline in -Xaa-Pro-Gly- sequences in collagens, especially types IV and V. May be involved in the secretory pathway of cells. Has growth suppressive activity in fibroblasts.

APPLICATION

To ensure optimal assay performance, AREX recommends conducting reagent titration tailored to each testing system for optimal detection results.

WB	1:500 - 1:2000
----	----------------

*Results are sample-specific. Please refer to your local assay conditions and test parameters for reference.

PRODUCT OVERVIEW

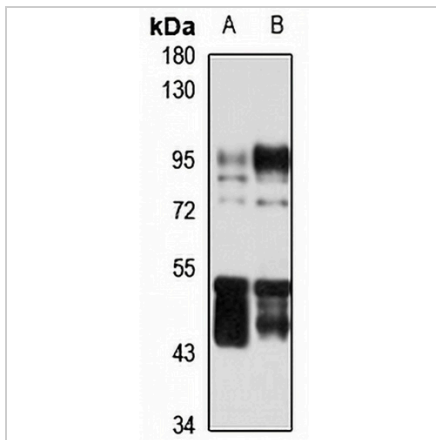
Description	Rabbit polyclonal antibody to Gros1
Specificity	Recognizes endogenous levels of Gros1 protein
Antibody Type	Primary antibody
Immunogen	Recombinant fusion protein of human Gros1. The exact sequence is proprietary.
Purification	The antibody was purified by immunogen affinity chromatography.
Molecular Weight	Predicted: 41; Observed: 95 kD
Form/Buffer	Liquid in 0.42% Potassium phosphate, 0.87% Sodium chloride, pH 7.3, 30% glycerol, and 0.01% sodium azide.
Alternative Names	GROS1; P3H1; Prolyl 3-hydroxylase 1; Growth suppressor 1; Leucine- and proline-enriched proteoglycan 1; Leprecan-1
Gene Symbol	LEPRE1
Entrez Gene	64175(Human); 56401(Mouse); 114200(Rat)
SwissProt	Q32P28(Human); Q3V1T4(Mouse); Q9R1J8(Rat)

*AREX continuously optimizes our products. Webpage content may not reflect the latest updates. For inquiries, please contact info@arexbio.com or your local distributor.

*Clone Number, Reactivity, Source/Host and Clonality can be found in the product name and Key Features section above.

DATASHEET**Gros1 Rabbit Polyclonal Antibody**

CAT. NO. APA16032

DATA

Western blot analysis of Gros1 expression in HT29 (A), SKOV3 (B) whole cell lysates. (Predicted band size: 41; 78; 83; 90 kD; Observed band size: 95 kD)

STORAGE

Store at 4°C short term. For long term storage, store at -20°C, avoiding freeze/thaw cycles.

NOTE

For Research Use Only. Not for diagnostic, therapeutics, prophylactic or in vivo use.