

**DATASHEET**

**LEPREL2 Rabbit Polyclonal Antibody**

CAT. NO. APA16033

**KEY FEATURES**

Target	LEPREL2	Source / Host	Rabbit
Reactivity	Human, Mouse	Clonality	Polyclonal
Applications	WB	Conjugation	Unconjugated
Form / Buffer	Liquid in 0.42% Potassium phosphate, 0.87% Sodium chloride, pH 7.3, 30% glycerol, and 0.01% sodium azide.		Storage at -20°C

**BACKGROUND**

Part of a complex composed of PLOD1, P3H3 and P3H4 that catalyzes hydroxylation of lysine residues in collagen alpha chains and is required for normal assembly and cross-linking of collagen fibrils. Required for normal hydroxylation of lysine residues in type I collagen chains in skin, bone, tendon, aorta and cornea. Required for normal skin stability via its role in hydroxylation of lysine residues in collagen alpha chains and in collagen fibril assembly. Apparently not required for normal prolyl 3-hydroxylation on collagen chains, possibly because it functions redundantly with other prolyl 3-hydroxylases.

**APPLICATION**

To ensure optimal assay performance, AREX recommends conducting reagent titration tailored to each testing system for optimal detection results.

WB	1:500 - 1:2000
----	----------------

\*Results are sample-specific. Please refer to your local assay conditions and test parameters for reference.

**PRODUCT OVERVIEW**

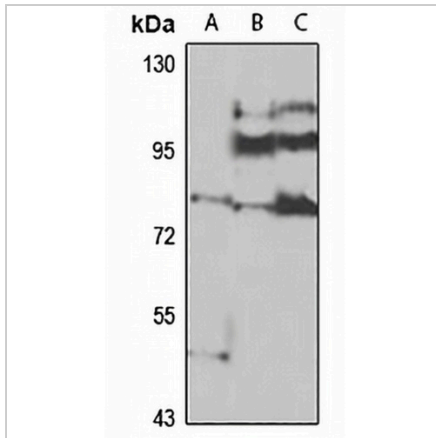
Description	Rabbit polyclonal antibody to LEPREL2
Specificity	Recognizes endogenous levels of LEPREL2 protein
Antibody Type	Primary antibody
Immunogen	Recombinant fusion protein of human LEPREL2. The exact sequence is proprietary.
Purification	The antibody was purified by immunogen affinity chromatography.
Molecular Weight	Predicted: 62; Observed: 82 kD
Form/Buffer	Liquid in 0.42% Potassium phosphate, 0.87% Sodium chloride, pH 7.3, 30% glycerol, and 0.01% sodium azide.
Alternative Names	P3H3; Prolyl 3-hydroxylase 3; Leprecan-like protein 2; Protein B
Gene Symbol	LEPREL2
Entrez Gene	10536(Human); 14789(Mouse)
SwissProt	Q8IVL6(Human); Q8CG70(Mouse)

\*AREX continuously optimizes our products. Webpage content may not reflect the latest updates. For inquiries, please contact [info@arexbio.com](mailto:info@arexbio.com) or your local distributor.

\*Clone Number, Reactivity, Source/Host and Clonality can be found in the product name and Key Features section above.

**DATASHEET****LEPREL2 Rabbit Polyclonal Antibody**

CAT. NO. APA16033

**DATA**

Western blot analysis of LEPREL2 expression in 22Rv1 (A), NIH3T3 (B), mouse skeletal muscle (C) whole cell lysates. (Predicted band size: 62; 81 kD; Observed band size: 82 kD)

**STORAGE**

Store at 4°C short term. For long term storage, store at -20°C, avoiding freeze/thaw cycles.

**NOTE**

For Research Use Only. Not for diagnostic, therapeutics, prophylactic or in vivo use.