

## DATASHEET

# LETM1 Rabbit Polyclonal Antibody

CAT. NO. APA16035

### KEY FEATURES

Target	LETM1	Source / Host	Rabbit
Reactivity	Human, Mouse, Rat	Clonality	Polyclonal
Applications	WB	Conjugation	Unconjugated
Form / Buffer	Liquid in 0.42% Potassium phosphate, 0.87% Sodium chloride, pH 7.3, 30% glycerol, and 0.01% sodium azide.		Storage at -20°C

### BACKGROUND

Plays an important role in maintenance of mitochondrial morphology and in mediating either calcium or potassium/proton antiport . Mediates proton-dependent calcium efflux from mitochondrion . Also functions as an electroneutral mitochondrial proton/potassium exchanger . Crucial for the maintenance of mitochondrial tubular networks and for the assembly of the supercomplexes of the respiratory chain . Required for the maintenance of the tubular shape and cristae organization .

### APPLICATION

To ensure optimal assay performance, AREX recommends conducting reagent titration tailored to each testing system for optimal detection results.

WB	1:500 - 1:2000
----	----------------

\*Results are sample-specific. Please refer to your local assay conditions and test parameters for reference.

### PRODUCT OVERVIEW

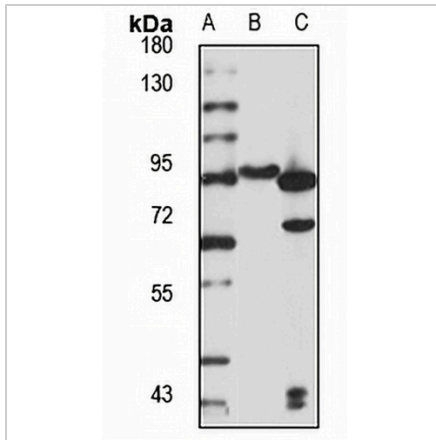
Description	Rabbit polyclonal antibody to LETM1
Specificity	Recognizes endogenous levels of LETM1 protein
Antibody Type	Primary antibody
Immunogen	Recombinant fusion protein of human LETM1. The exact sequence is proprietary.
Purification	The antibody was purified by immunogen affinity chromatography.
Molecular Weight	Predicted: 29; Observed: 83 kD
Form/Buffer	Liquid in 0.42% Potassium phosphate, 0.87% Sodium chloride, pH 7.3, 30% glycerol, and 0.01% sodium azide.
Alternative Names	LETM1 and EF-hand domain-containing protein 1 mitochondrial; Leucine zipper-EF-hand-containing transmembrane protein 1
Gene Symbol	LETM1
Entrez Gene	3954(Human); 56384(Mouse); 305457(Rat)
SwissProt	O95202(Human); Q9Z2I0(Mouse); Q5XIN6(Rat)

\*AREX continuously optimizes our products. Webpage content may not reflect the latest updates. For inquiries, please contact [info@arexbio.com](mailto:info@arexbio.com) or your local distributor.

\*Clone Number, Reactivity, Source/Host and Clonality can be found in the product name and Key Features section above.

**DATASHEET****LETM1 Rabbit Polyclonal Antibody**

CAT. NO. APA16035

**DATA**

Western blot analysis of LETM1 expression in HeLa (A), mouse heart (B), rat brain (C) whole cell lysates. (Predicted band size: 29; 33; 83 kD; Observed band size: 83 kD)

**STORAGE**

Store at 4°C short term. For long term storage, store at -20°C, avoiding freeze/thaw cycles.

**NOTE**

For Research Use Only. Not for diagnostic, therapeutics, prophylactic or in vivo use.