

DATASHEET

LETM2 Rabbit Polyclonal Antibody

CAT. NO. APA16036

KEY FEATURES

Target	LETM2	Source / Host	Rabbit
Reactivity	Human, Mouse, Rat	Clonality	Polyclonal
Applications	WB	Conjugation	Unconjugated
Form / Buffer	Liquid in 0.42% Potassium phosphate, 0.87% Sodium chloride, pH 7.3, 30% glycerol, and 0.01% sodium azide.		Storage at-20°C

BACKGROUND

LETM1 domain-containing protein LETM2, mitochondrial (LETM2), also known as LETM1 and EF-hand domain-containing protein 2, Leucine zipper-EF-hand-containing transmembrane protein 1-like. Subcellular location: Mitochondrion inner membrane

APPLICATION

To ensure optimal assay performance, AREX recommends conducting reagent titration tailored to each testing system for optimal detection results.

WB	1:500 - 1:2000
----	----------------

*Results are sample-specific. Please refer to your local assay conditions and test parameters for reference.

PRODUCT OVERVIEW

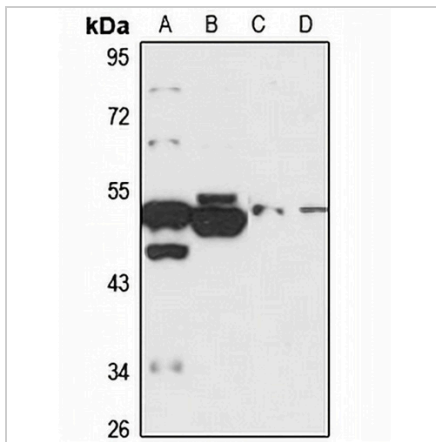
Description	Rabbit polyclonal antibody to LETM2
Specificity	Recognizes endogenous levels of LETM2 protein
Antibody Type	Primary antibody
Immunogen	Recombinant fusion protein of human LETM2. The exact sequence is proprietary.
Purification	The antibody was purified by immunogen affinity chromatography.
Molecular Weight	Predicted: 30; Observed: 54 kD
Form/Buffer	Liquid in 0.42% Potassium phosphate, 0.87% Sodium chloride, pH 7.3, 30% glycerol, and 0.01% sodium azide.
Alternative Names	LETM1 domain-containing protein LETM2 mitochondrial; LETM1 and EF-hand domain-containing protein 2; Leucine zipper-EF-hand-containing transmembrane protein 1-like
Gene Symbol	LETM2
Entrez Gene	137994(Human); 270035(Mouse); 361169(Rat)
SwissProt	Q2VYF4(Human); Q7TNU7(Mouse); Q5PQQ5(Rat)

*AREX continuously optimizes our products. Webpage content may not reflect the latest updates. For inquiries, please contact info@arexbio.com or your local distributor.

*Clone Number, Reactivity, Source/Host and Clonality can be found in the product name and Key Features section above.

DATASHEET**LETM2 Rabbit Polyclonal Antibody**

CAT. NO. APA16036

DATA

Western blot analysis of LETM2 expression in U87MG (A), mouse brain (B), rat testis (C), rat lung (D) whole cell lysates. (Predicted band size: 30; 44; 50; 55 kD; Observed band size: 54 kD)

STORAGE

Store at 4°C short term. For long term storage, store at -20°C, avoiding freeze/thaw cycles.

NOTE

For Research Use Only. Not for diagnostic, therapeutics, prophylactic or in vivo use.