

DATASHEET

Legumain Rabbit Polyclonal Antibody

CAT. NO. APA16040

KEY FEATURES

Target	Legumain	Source / Host	Rabbit
Reactivity	Human, Mouse, Rat	Clonality	Polyclonal
Applications	WB, IF/ICC	Conjugation	Unconjugated
Form / Buffer	Liquid in 0.42% Potassium phosphate, 0.87% Sodium chloride, pH 7.3, 30% glycerol, and 0.01% sodium azide.		Storage at -20°C

BACKGROUND

Has a strict specificity for hydrolysis of asparaginyl bonds . Can also cleave aspartyl bonds slowly, especially under acidic conditions . Involved in the processing of proteins for MHC class II antigen presentation in the lysosomal/endosomal system . Also involved in MHC class I antigen presentation in cross-presenting dendritic cells by mediating cleavage and maturation of Perforin-2 (MPEG1), thereby promoting antigen translocation in the cytosol . Required for normal lysosomal protein degradation in renal proximal tubules . Required for normal degradation of internalized EGFR . Plays a role in the regulation of cell proliferation via its role in EGFR degradation .

APPLICATION

To ensure optimal assay performance, AREX recommends conducting reagent titration tailored to each testing system for optimal detection results.

WB	1:500 - 1:2000
IF/ICC	1:50 - 1:200

*Results are sample-specific. Please refer to your local assay conditions and test parameters for reference.

PRODUCT OVERVIEW

Description	Rabbit polyclonal antibody to Legumain
Specificity	Recognizes endogenous levels of Legumain protein
Antibody Type	Primary antibody
Immunogen	Recombinant fusion protein of human Legumain. The exact sequence is proprietary.
Purification	The antibody was purified by immunogen affinity chromatography.
Molecular Weight	Predicted: 42; Observed: 54 kD
Form/Buffer	Liquid in 0.42% Potassium phosphate, 0.87% Sodium chloride, pH 7.3, 30% glycerol, and 0.01% sodium azide.
Alternative Names	PRSC1; Legumain; Asparaginyl endopeptidase; Protease cysteine 1
Gene Symbol	LGMN
Entrez Gene	5641(Human); 19141(Mouse); 63865(Rat)
SwissProt	Q99538(Human); O89017(Mouse); Q9R0J8(Rat)

*AREX continuously optimizes our products. Webpage content may not reflect the latest updates. For inquiries, please contact info@arexbio.com or your local distributor.

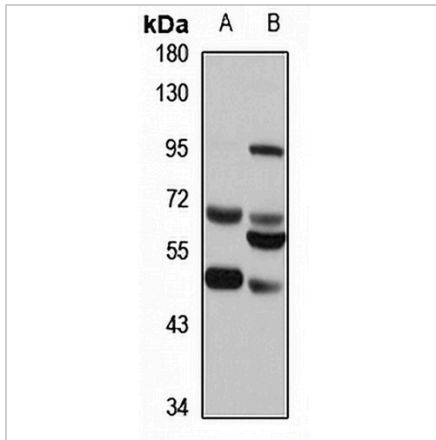
*Clone Number, Reactivity, Source/Host and Clonality can be found in the product name and Key Features section above.

DATASHEET

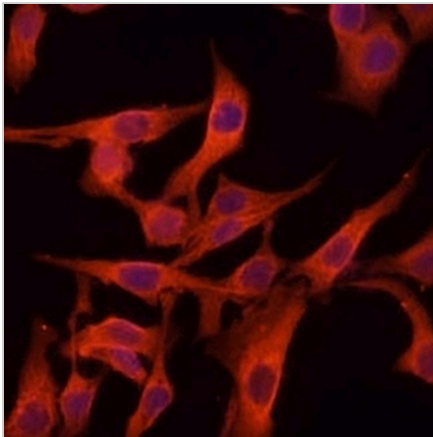
Legumain Rabbit Polyclonal Antibody

CAT. NO. APA16040

DATA



Western blot analysis of Legumain expression in mouse lung (A), mouse liver (B) whole cell lysates. (Predicted band size: 42; 49 kD; Observed band size: 54 kD)



Immunofluorescent analysis of Legumain staining in HeLa cells. Formalin-fixed cells were permeabilized with 0.1% Triton X-100 in TBS for 5-10 minutes and blocked with 3% BSA-PBS for 30 minutes at room temperature. Cells were probed with the primary antibody in 3% BSA-PBS and incubated overnight at 4 °C in a humidified chamber. Cells were washed with PBST and incubated with a Alexa Fluor 594-conjugated secondary antibody (red) in PBS at room temperature in the dark.

STORAGE

Store at 4°C short term. For long term storage, store at -20°C, avoiding freeze/thaw cycles.

NOTE

For Research Use Only. Not for diagnostic, therapeutics, prophylactic or in vivo use.