

## DATASHEET

# LHFPL2 Rabbit Polyclonal Antibody

CAT. NO. APA16041

### KEY FEATURES

Target	LHFPL2	Source / Host	Rabbit
Reactivity	Human	Clonality	Polyclonal
Applications	WB	Conjugation	Unconjugated
Form / Buffer	Liquid in 0.42% Potassium phosphate, 0.87% Sodium chloride, pH 7.3, 30% glycerol, and 0.01% sodium azide.		Storage at -20°C

### BACKGROUND

Plays a role in female and male fertility. Involved in distal reproductive tract development.

### APPLICATION

To ensure optimal assay performance, AREX recommends conducting reagent titration tailored to each testing system for optimal detection results.

WB	1:500 - 1:2000
----	----------------

\*Results are sample-specific. Please refer to your local assay conditions and test parameters for reference.

### PRODUCT OVERVIEW

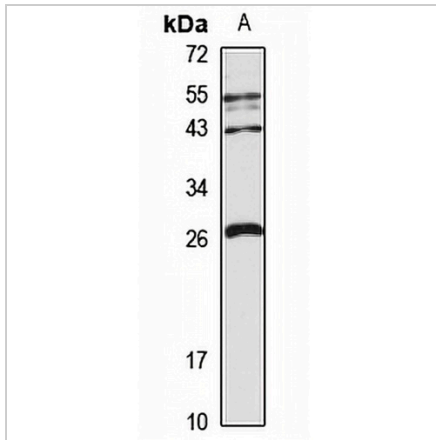
Description	Rabbit polyclonal antibody to LHFPL2
Specificity	Recognizes endogenous levels of LHFPL2 protein
Antibody Type	Primary antibody
Immunogen	Recombinant fusion protein of human LHFPL2. The exact sequence is proprietary.
Purification	The antibody was purified by immunogen affinity chromatography.
Molecular Weight	Predicted: 24 kD; Observed: 26 kD
Form/Buffer	Liquid in 0.42% Potassium phosphate, 0.87% Sodium chloride, pH 7.3, 30% glycerol, and 0.01% sodium azide.
Alternative Names	KIAA0206; Lipoma HMGIC fusion partner-like 2 protein
Gene Symbol	LHFPL2
Entrez Gene	10184(Human)
SwissProt	Q6ZUX7(Human)

\*AREX continuously optimizes our products. Webpage content may not reflect the latest updates. For inquiries, please contact [info@arexbio.com](mailto:info@arexbio.com) or your local distributor.

\*Clone Number, Reactivity, Source/Host and Clonality can be found in the product name and Key Features section above.

**DATASHEET****LHFPL2 Rabbit Polyclonal Antibody**

CAT. NO. APA16041

**DATA**

Western blot analysis of LHFPL2 expression in K562 (A) whole cell lysates. (Predicted band size: 24 kD; Observed band size: 26 kD)

**STORAGE**

Store at 4°C short term. For long term storage, store at -20°C, avoiding freeze/thaw cycles.

**NOTE**

For Research Use Only. Not for diagnostic, therapeutics, prophylactic or in vivo use.