

DATASHEET

LHX2 Rabbit Polyclonal Antibody

CAT. NO. APA16042

KEY FEATURES

Target	LHX2	Source / Host	Rabbit
Reactivity	Human, Mouse, Rat	Clonality	Polyclonal
Applications	WB	Conjugation	Unconjugated
Form / Buffer	Liquid in 0.42% Potassium phosphate, 0.87% Sodium chloride, pH 7.3, 30% glycerol, and 0.01% sodium azide.		Storage at -20°C

BACKGROUND

Acts as a transcriptional activator. Stimulates the promoter of the alpha-glycoprotein gene. Transcriptional regulatory protein involved in the control of cell differentiation in developing lymphoid and neural cell types .

APPLICATION

To ensure optimal assay performance, AREX recommends conducting reagent titration tailored to each testing system for optimal detection results.

WB	1:500 - 1:2000
----	----------------

*Results are sample-specific. Please refer to your local assay conditions and test parameters for reference.

PRODUCT OVERVIEW

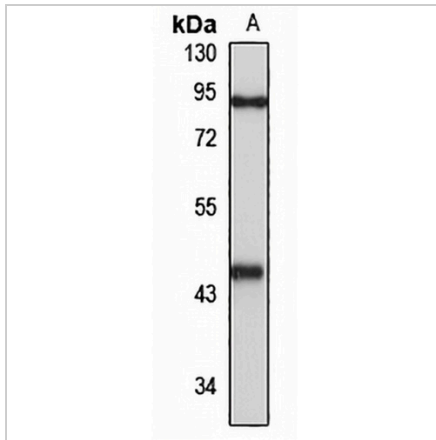
Description	Rabbit polyclonal antibody to LHX2
Specificity	Recognizes endogenous levels of LHX2 protein
Antibody Type	Primary antibody
Immunogen	Recombinant fusion protein of human LHX2. The exact sequence is proprietary.
Purification	The antibody was purified by immunogen affinity chromatography.
Molecular Weight	Predicted: 44 kD; Observed: 44 kD
Form/Buffer	Liquid in 0.42% Potassium phosphate, 0.87% Sodium chloride, pH 7.3, 30% glycerol, and 0.01% sodium azide.
Alternative Names	LH2; LIM/homeobox protein Lhx2; Homeobox protein LH-2; LIM homeobox protein 2
Gene Symbol	LHX2
Entrez Gene	9355(Human); 16870(Mouse)
SwissProt	P50458(Human); Q9Z0S2(Mouse); P36198(Rat)

*AREX continuously optimizes our products. Webpage content may not reflect the latest updates. For inquiries, please contact info@arexbio.com or your local distributor.

*Clone Number, Reactivity, Source/Host and Clonality can be found in the product name and Key Features section above.

DATASHEET**LHX2 Rabbit Polyclonal Antibody**

CAT. NO. APA16042

DATA

Western blot analysis of LHX2 expression in NCIH460 (A) whole cell lysates. (Predicted band size: 44 kD; Observed band size: 44 kD)

STORAGE

Store at 4°C short term. For long term storage, store at -20°C, avoiding freeze/thaw cycles.

NOTE

For Research Use Only. Not for diagnostic, therapeutics, prophylactic or in vivo use.