

DATASHEET

CD85g Rabbit Polyclonal Antibody

CAT. NO. APA16045

KEY FEATURES

Target	CD85g	Source / Host	Rabbit
Reactivity	Human, Mouse, Rat	Clonality	Polyclonal
Applications	WB	Conjugation	Unconjugated
Form / Buffer	Liquid in 0.42% Potassium phosphate, 0.87% Sodium chloride, pH 7.3, 30% glycerol, and 0.01% sodium azide.		Storage at -20°C

BACKGROUND

Functions coreceptor to limit the innate immune responses to viral infections; signaling occurs via FCER1G . Down-regulates the production of IFNA1, IFNA2, IFNA4, IFNB1 and TNF by plasmacytoid dendritic cells that have been exposed to influenza virus or cytidine-phosphate-guanosine (CpG) dinucleotides, indicating it functions as a negative regulator of TLR7 and TLR9 signaling cascades . Down-regulates interferon production in response to interaction with BST2 on HIV-1 infected cells . Activates a signaling cascade in complex with FCER1G that results in phosphorylation of Src family and Syk kinases and thereby triggers mobilization of intracellular Ca(2+) . Does not interfere with the differentiation of plasmacytoid dendritic cells into antigen-presenting cells .

APPLICATION

To ensure optimal assay performance, AREX recommends conducting reagent titration tailored to each testing system for optimal detection results.

WB	1:500 - 1:2000
----	----------------

*Results are sample-specific. Please refer to your local assay conditions and test parameters for reference.

PRODUCT OVERVIEW

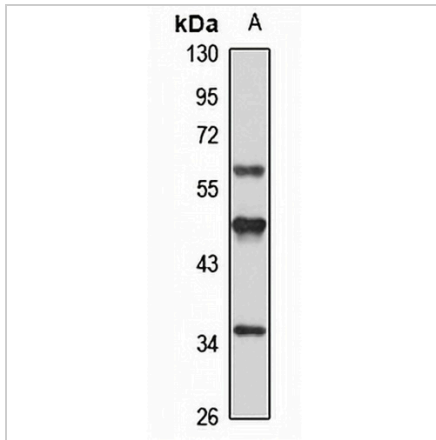
Description	Rabbit polyclonal antibody to CD85g
Specificity	Recognizes endogenous levels of CD85g protein
Antibody Type	Primary antibody
Immunogen	Recombinant fusion protein of human CD85g. The exact sequence is proprietary.
Purification	The antibody was purified by immunogen affinity chromatography.
Molecular Weight	Predicted: 47; Observed: 50 kD
Form/Buffer	Liquid in 0.42% Potassium phosphate, 0.87% Sodium chloride, pH 7.3, 30% glycerol, and 0.01% sodium azide.
Alternative Names	ILT7; Leukocyte immunoglobulin-like receptor subfamily A member 4; CD85 antigen-like family member G; Immunoglobulin-like transcript 7; ILT-7; CD85g
Gene Symbol	LILRA4
Entrez Gene	23547(Human)
SwissProt	P59901(Human)

*AREX continuously optimizes our products. Webpage content may not reflect the latest updates. For inquiries, please contact info@arexbio.com or your local distributor.

*Clone Number, Reactivity, Source/Host and Clonality can be found in the product name and Key Features section above.

DATASHEET**CD85g Rabbit Polyclonal Antibody**

CAT. NO. APA16045

DATA

Western blot analysis of CD85g expression in LO2 (A) whole cell lysates. (Predicted band size: 47; 55 kD; Observed band size: 50 kD)

STORAGE

Store at 4°C short term. For long term storage, store at -20°C, avoiding freeze/thaw cycles.

NOTE

For Research Use Only. Not for diagnostic, therapeutics, prophylactic or in vivo use.