

DATASHEET
LIPH Rabbit Polyclonal Antibody
CAT. NO. APA16054
KEY FEATURES

Target	LIPH	Source / Host	Rabbit
Reactivity	Human, Mouse, Rat	Clonality	Polyclonal
Applications	WB	Conjugation	Unconjugated
Form / Buffer	Liquid in 0.42% Potassium phosphate, 0.87% Sodium chloride, pH 7.3, 30% glycerol, and 0.01% sodium azide.		Storage at-20°C

BACKGROUND

Hydrolyzes specifically phosphatidic acid (PA) to produce 2-acyl lysophosphatidic acid (LPA; a potent bioactive lipid mediator) and fatty acid. Does not hydrolyze other phospholipids, like phosphatidylserine (PS), phosphatidylcholine (PC) and phosphatidylethanolamine (PE) or triacylglycerol (TG).

APPLICATION

To ensure optimal assay performance, AREX recommends conducting reagent titration tailored to each testing system for optimal detection results.

WB	1:500 - 1:2000
----	----------------

*Results are sample-specific. Please refer to your local assay conditions and test parameters for reference.

PRODUCT OVERVIEW

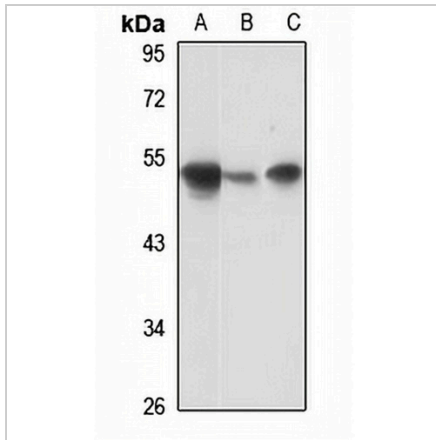
Description	Rabbit polyclonal antibody to LIPH
Specificity	Recognizes endogenous levels of LIPH protein
Antibody Type	Primary antibody
Immunogen	KLH-conjugated synthetic peptide of human LIPH. The exact sequence is proprietary.
Purification	The antibody was purified by immunogen affinity chromatography.
Molecular Weight	Predicted: 50 kD; Observed: 54 kD
Form/Buffer	Liquid in 0.42% Potassium phosphate, 0.87% Sodium chloride, pH 7.3, 30% glycerol, and 0.01% sodium azide.
Alternative Names	LPDLR; MPAPLA1; PLA1B; Lipase member H; LIPH; LPD lipase-related protein; Membrane-associated phosphatidic acid-selective phospholipase A1-alpha; mPA-PLA1 alpha; Phospholipase A1 member B
Gene Symbol	LIPH
Entrez Gene	200879(Human); 239759(Mouse); 681694(Rat)
SwissProt	Q8WWY8(Human); Q8CIV3(Mouse); Q32PY2(Rat)

*AREX continuously optimizes our products. Webpage content may not reflect the latest updates. For inquiries, please contact info@arexbio.com or your local distributor.

*Clone Number, Reactivity, Source/Host and Clonality can be found in the product name and Key Features section above.

DATASHEET**LIPH Rabbit Polyclonal Antibody**

CAT. NO. APA16054

DATA

Western blot analysis of LIPH expression in HEK293T (A), mouse lung (B), rat testis (C) whole cell lysates. (Predicted band size: 50 kD; Observed band size: 54 kD)

STORAGE

Store at 4°C short term. For long term storage, store at -20°C, avoiding freeze/thaw cycles.

NOTE

For Research Use Only. Not for diagnostic, therapeutics, prophylactic or in vivo use.