

**DATASHEET**

**LLPH Rabbit Polyclonal Antibody**

CAT. NO. APA16055

**KEY FEATURES**

Target	LLPH	Source / Host	Rabbit
Reactivity	Human, Rat	Clonality	Polyclonal
Applications	WB	Conjugation	Unconjugated
Form / Buffer	Liquid in 0.42% Potassium phosphate, 0.87% Sodium chloride, pH 7.3, 30% glycerol, and 0.01% sodium azide.		Storage at -20°C

**BACKGROUND**

In hippocampal neurons, regulates dendritic and spine growth and synaptic transmission.

**APPLICATION**

To ensure optimal assay performance, AREX recommends conducting reagent titration tailored to each testing system for optimal detection results.

WB	1:500 - 1:2000
----	----------------

\*Results are sample-specific. Please refer to your local assay conditions and test parameters for reference.

**PRODUCT OVERVIEW**

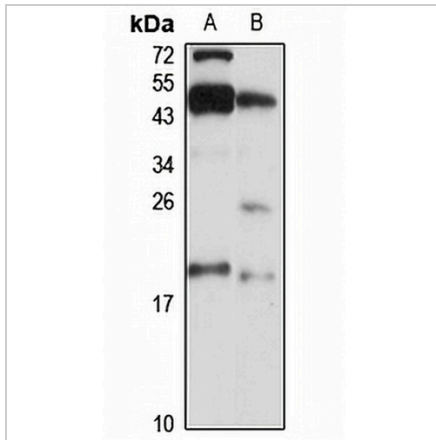
Description	Rabbit polyclonal antibody to LLPH
Specificity	Recognizes endogenous levels of LLPH protein
Antibody Type	Primary antibody
Immunogen	Recombinant fusion protein of human LLPH. The exact sequence is proprietary.
Purification	The antibody was purified by immunogen affinity chromatography.
Molecular Weight	Predicted: 15 kD; Observed: 18 kD
Form/Buffer	Liquid in 0.42% Potassium phosphate, 0.87% Sodium chloride, pH 7.3, 30% glycerol, and 0.01% sodium azide.
Alternative Names	C12orf31; Protein LLP homolog; Protein LAPS18-like
Gene Symbol	LLPH
Entrez Gene	84298(Human)
SwissProt	Q9BRT6(Human)

\*AREX continuously optimizes our products. Webpage content may not reflect the latest updates. For inquiries, please contact [info@arexbio.com](mailto:info@arexbio.com) or your local distributor.

\*Clone Number, Reactivity, Source/Host and Clonality can be found in the product name and Key Features section above.

**DATASHEET****LLPH Rabbit Polyclonal Antibody**

CAT. NO. APA16055

**DATA**

Western blot analysis of LLPH expression in BxPC3 (A), rat pancreas (B) whole cell lysates.  
(Predicted band size: 15 kD; Observed band size: 18 kD)

**STORAGE**

Store at 4°C short term. For long term storage, store at -20°C, avoiding freeze/thaw cycles.

**NOTE**

For Research Use Only. Not for diagnostic, therapeutics, prophylactic or in vivo use.