

DATASHEET

LMBRD1 Rabbit Polyclonal Antibody

CAT. NO. APA16056

KEY FEATURES

Target	LMBRD1	Source / Host	Rabbit
Reactivity	Human, Mouse, Rat	Clonality	Polyclonal
Applications	WB, IF/ICC	Conjugation	Unconjugated
Form / Buffer	Liquid in 0.42% Potassium phosphate, 0.87% Sodium chloride, pH 7.3, 30% glycerol, and 0.01% sodium azide.		Storage at -20°C

BACKGROUND

Lysosomal membrane chaperone required to export cobalamin (vitamin B12) from the lysosome to the cytosol, allowing its conversion to cofactors from the lysosome to the cytosol, allowing its conversion to cofactors . Targets ABCD4 transporter from the endoplasmic reticulum to the lysosome . Then forms a complex with lysosomal ABCD4 and cytoplasmic MMACHC to transport cobalamin across the lysosomal membrane . Acts as an adapter protein which plays an important role in mediating and regulating the internalization of the insulin receptor (INSR) . Involved in clathrin-mediated endocytosis of INSR via its interaction with adapter protein complex 2 . Essential for the initiation of gastrulation and early formation of mesoderm structures during embryogenesis .

APPLICATION

To ensure optimal assay performance, AREX recommends conducting reagent titration tailored to each testing system for optimal detection results.

WB	1:500 - 1:2000
IF/ICC	1:50 - 1:200

*Results are sample-specific. Please refer to your local assay conditions and test parameters for reference.

PRODUCT OVERVIEW

Description	Rabbit polyclonal antibody to LMBRD1
Specificity	Recognizes endogenous levels of LMBRD1 protein
Antibody Type	Primary antibody
Immunogen	Recombinant fusion protein of human LMBRD1. The exact sequence is proprietary.
Purification	The antibody was purified by immunogen affinity chromatography.
Molecular Weight	Predicted: 21; Observed: 50 kD
Form/Buffer	Liquid in 0.42% Potassium phosphate, 0.87% Sodium chloride, pH 7.3, 30% glycerol, and 0.01% sodium azide.
Alternative Names	C6orf209; NESI; Probable lysosomal cobalamin transporter; HDAG-L-interacting protein NESI; LMBR1 domain-containing protein 1; Nuclear export signal-interacting protein
Gene Symbol	LMBRD1
Entrez Gene	55788(Human); 68421(Mouse); 246046(Rat)
SwissProt	Q9NUN5(Human); Q8K0B2(Mouse); Q6AZ61(Rat)

*AREX continuously optimizes our products. Webpage content may not reflect the latest updates. For inquiries, please contact info@arexbio.com or your local distributor.

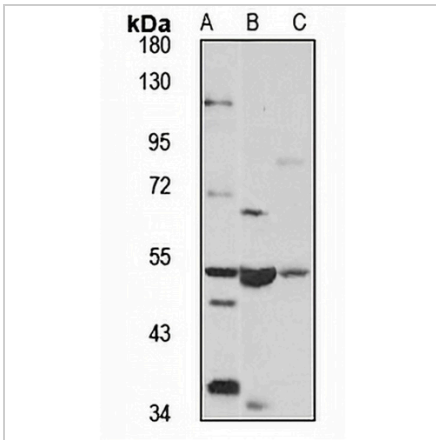
*Clone Number, Reactivity, Source/Host and Clonality can be found in the product name and Key Features section above.

DATASHEET

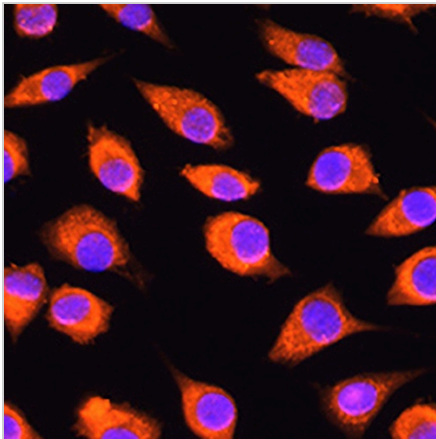
LMBRD1 Rabbit Polyclonal Antibody

CAT. NO. APA16056

DATA



Western blot analysis of LMBRD1 expression in HeLa (A), mouse brain (B), mouse lung (C) whole cell lysates. (Predicted band size: 21; 44; 53; 61 kD; Observed band size: 50 kD)



Immunofluorescent analysis of LMBRD1 staining in L929 cells. Formalin-fixed cells were permeabilized with 0.1% Triton X-100 in TBS for 5-10 minutes and blocked with 3% BSA-PBS for 30 minutes at room temperature. Cells were probed with the primary antibody in 3% BSA-PBS and incubated overnight at 4 °C in a humidified chamber. Cells were washed with PBST and incubated with a AREX® Fluor 594-conjugated secondary antibody (red) in PBS at room temperature in the dark. DAPI was used to stain the cell nuclei (blue).

STORAGE

Store at 4°C short term. For long term storage, store at -20°C, avoiding freeze/thaw cycles.

NOTE

For Research Use Only. Not for diagnostic, therapeutics, prophylactic or in vivo use.