

DATASHEET

P-LAP Rabbit Polyclonal Antibody

CAT. NO. APA16058

KEY FEATURES

Target	P-LAP	Source / Host	Rabbit
Reactivity	Human, Mouse, Rat	Clonality	Polyclonal
Applications	WB, IHC	Conjugation	Unconjugated
Form / Buffer	Liquid in 0.42% Potassium phosphate, 0.87% Sodium chloride, pH 7.3, 30% glycerol, and 0.01% sodium azide.		Storage at-20°C

BACKGROUND

Release of an N-terminal amino acid, cleaves before cysteine, leucine as well as other amino acids. Degrades peptide hormones such as oxytocin, vasopressin and angiotensin III, and plays a role in maintaining homeostasis during pregnancy. May be involved in the inactivation of neuronal peptides in the brain. Cleaves Met-enkephalin and dynorphin. Binds angiotensin IV and may be the angiotensin IV receptor in the brain.

APPLICATION

To ensure optimal assay performance, AREX recommends conducting reagent titration tailored to each testing system for optimal detection results.

WB	1:500 - 1:2000
IHC	1:50 - 1:200

*Results are sample-specific. Please refer to your local assay conditions and test parameters for reference.

PRODUCT OVERVIEW

Description	Rabbit polyclonal antibody to P-LAP
Specificity	Recognizes endogenous levels of P-LAP protein
Antibody Type	Primary antibody
Immunogen	Recombinant fusion protein of human P-LAP. The exact sequence is proprietary.
Purification	The antibody was purified by immunogen affinity chromatography.
Molecular Weight	Predicted: 115; Observed: 165 kD
Form/Buffer	Liquid in 0.42% Potassium phosphate, 0.87% Sodium chloride, pH 7.3, 30% glycerol, and 0.01% sodium azide.
Alternative Names	OTASE; Leucyl-cystinyl aminopeptidase; Cystinyl aminopeptidase; Insulin-regulated membrane aminopeptidase; Insulin-responsive aminopeptidase; IRAP; Oxytocinase; OTase; Placental leucine aminopeptidase; P-LAP
Gene Symbol	LNPEP
Entrez Gene	4012(Human); 240028(Mouse); 100912445; 171105(Rat)
SwissProt	Q9UIQ6(Human); Q8C129(Mouse); P97629(Rat)

*AREX continuously optimizes our products. Webpage content may not reflect the latest updates. For inquiries, please contact info@arexbio.com or your local distributor.

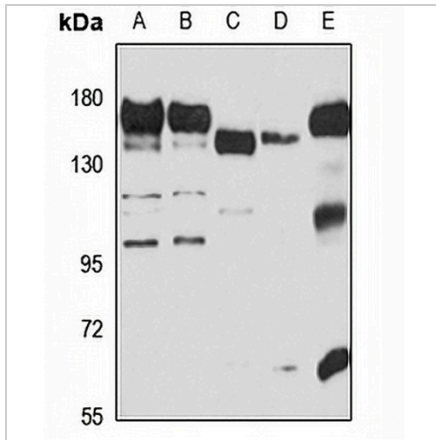
*Clone Number, Reactivity, Source/Host and Clonality can be found in the product name and Key Features section above.

DATASHEET

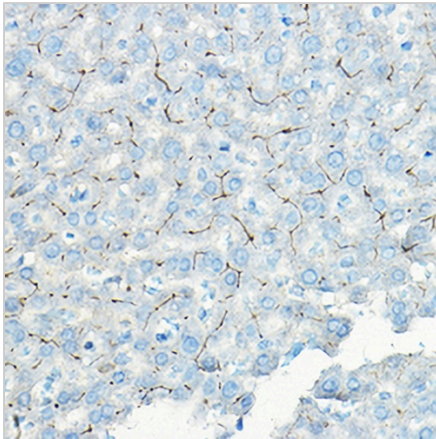
P-LAP Rabbit Polyclonal Antibody

CAT. NO. APA16058

DATA



Western blot analysis of P-LAP expression in HeLa (A), Jurkat (B), mouse brain (C), mouse liver (D), rat heart (E) whole cell lysates. (Predicted band size: 115; 117 kD; Observed band size: 165 kD)



Immunohistochemical analysis of P-LAP staining in rat liver formalin fixed paraffin embedded tissue section. The section was pre-treated using heat mediated antigen retrieval with sodium citrate buffer (pH 6.0). The section was then incubated with the antibody at room temperature and detected using an HRP conjugated compact polymer system. DAB was used as the chromogen. The section was then counterstained with haematoxylin and mounted with DPX.

STORAGE

Store at 4°C short term. For long term storage, store at -20°C, avoiding freeze/thaw cycles.

NOTE

For Research Use Only. Not for diagnostic, therapeutics, prophylactic or in vivo use.