

**DATASHEET**

**LPAAT eta Rabbit Polyclonal Antibody**

CAT. NO. APA16064

**KEY FEATURES**

Target	LPAAT eta	Source / Host	Rabbit
Reactivity	Human, Mouse, Rat	Clonality	Polyclonal
Applications	WB	Conjugation	Unconjugated
Form / Buffer	Liquid in 0.42% Potassium phosphate, 0.87% Sodium chloride, pH 7.3, 30% glycerol, and 0.01% sodium azide.		Storage at-20°C

**BACKGROUND**

Displays acyl-CoA-dependent lysophospholipid acyltransferase activity with a subset of lysophospholipids as substrates; converts lysophosphatidylethanolamine to phosphatidylethanolamine, lysophosphatidylcholine to phosphatidylcholine, 1-alkenyl-lysophosphatidylethanolamine to 1-alkenyl-phosphatidylethanolamine, lysophosphatidylglycerol and alkyl-lysophosphatidylcholine to phosphatidylglycerol and alkyl-phosphatidylcholine, respectively. In contrast, has no lysophosphatidylinositol, glycerol-3-phosphate, diacylglycerol or lysophosphatidic acid acyltransferase activity. Prefers long chain acyl-CoAs (C16, C18) as acyl donors.

**APPLICATION**

To ensure optimal assay performance, AREX recommends conducting reagent titration tailored to each testing system for optimal detection results.

WB	1:500 - 1:2000
----	----------------

\*Results are sample-specific. Please refer to your local assay conditions and test parameters for reference.

**PRODUCT OVERVIEW**

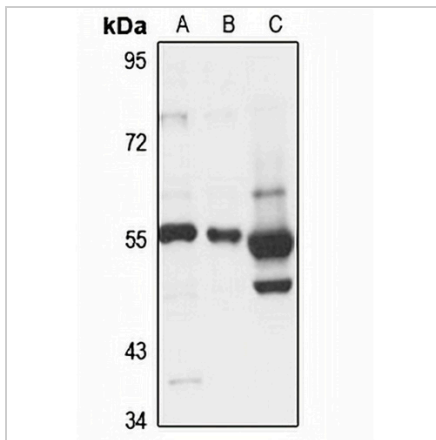
Description	Rabbit polyclonal antibody to LPAAT eta
Specificity	Recognizes endogenous levels of LPAAT eta protein
Antibody Type	Primary antibody
Immunogen	Recombinant fusion protein of human LPAAT eta. The exact sequence is proprietary.
Purification	The antibody was purified by immunogen affinity chromatography.
Molecular Weight	Predicted: 57 kD; Observed: 57 kD
Form/Buffer	Liquid in 0.42% Potassium phosphate, 0.87% Sodium chloride, pH 7.3, 30% glycerol, and 0.01% sodium azide.
Alternative Names	AGPAT7; AYTL3; LPEAT2; Lysophospholipid acyltransferase LPCAT4; 1-acylglycerol-3-phosphate O-acyltransferase 7; 1-AGP acyltransferase 7; 1-AGPAT 7; 1-acylglycerophosphocholine O-acyltransferase; 1-acylglycerophosphoserine O-acyltransferase; 1-alkenylglycerophosphoethanolamine O-acyltransferase; 1-alkylglycerophosphocholine O-acetyltransferase; Acyltransferase-like 3; Lysophosphatidylcholine acyltransferase 4; Lysophosphatidylethanolamine acyltransferase 2; Plasmalogen synthase
Gene Symbol	LPCAT4
Entrez Gene	254531(Human); 99010(Mouse)
SwissProt	Q643R3(Human); Q6NVG1(Mouse)

\*AREX continuously optimizes our products. Webpage content may not reflect the latest updates. For inquiries, please contact [info@arexbio.com](mailto:info@arexbio.com) or your local distributor.

\*Clone Number, Reactivity, Source/Host and Clonality can be found in the product name and Key Features section above.

**DATASHEET****LPAAT eta Rabbit Polyclonal Antibody**

CAT. NO. APA16064

**DATA**

Western blot analysis of LPAAT eta expression in HeLa (A), HepG2 (B), mouse brain (C) whole cell lysates. (Predicted band size: 57 kD; Observed band size: 57 kD)

**STORAGE**

Store at 4°C short term. For long term storage, store at -20°C, avoiding freeze/thaw cycles.

**NOTE**

For Research Use Only. Not for diagnostic, therapeutics, prophylactic or in vivo use.