

**DATASHEET**

**LPO Rabbit Polyclonal Antibody**

CAT. NO. APA16067

**KEY FEATURES**

Target	LPO	Source / Host	Rabbit
Reactivity	Human	Clonality	Polyclonal
Applications	WB	Conjugation	Unconjugated
Form / Buffer	Liquid in 0.42% Potassium phosphate, 0.87% Sodium chloride, pH 7.3, 30% glycerol, and 0.01% sodium azide.		Storage at -20°C

**BACKGROUND**

Heme-containing oxidoreductase which catalyzes the conversion of thiocyanate (SCN(-)) into antimicrobial agent hypothiocyanous acid (OSCN(-)) in the presence of hydrogen peroxide (H2O2) . Also involved in the conversion of iodide (I(-)) into hypiodite (IO(-)) in the presence of H2O2 . Responsible for the inactivation of a wide range of micro-organisms and hence, important component of defense mechanism ) into antimicrobial agent hypothiocyanous acid (OSCN(-)) in the presence of hydrogen peroxide (H2O2) . Also involved in the conversion of iodide (I(-)) into hypiodite (IO(-)) in the presence of H2O2 . Responsible for the inactivation of a wide range of micro-organisms and hence, important component of defense mechanism . Shows antibacterial properties against Pseudomonas aeruginosa .

**APPLICATION**

To ensure optimal assay performance, AREX recommends conducting reagent titration tailored to each testing system for optimal detection results.

WB	1:500 - 1:2000
----	----------------

\*Results are sample-specific. Please refer to your local assay conditions and test parameters for reference.

**PRODUCT OVERVIEW**

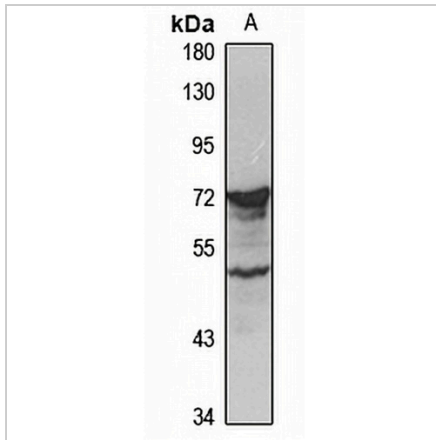
Description	Rabbit polyclonal antibody to LPO
Specificity	Recognizes endogenous levels of LPO protein
Antibody Type	Primary antibody
Immunogen	Recombinant fusion protein of human LPO. The exact sequence is proprietary.
Purification	The antibody was purified by immunogen affinity chromatography.
Molecular Weight	Predicted: 70; Observed: 70 kD
Form/Buffer	Liquid in 0.42% Potassium phosphate, 0.87% Sodium chloride, pH 7.3, 30% glycerol, and 0.01% sodium azide.
Alternative Names	SAPX; Lactoperoxidase; LPO; Salivary peroxidase; SPO
Gene Symbol	LPO
Entrez Gene	4025(Human)
SwissProt	P22079(Human)

\*AREX continuously optimizes our products. Webpage content may not reflect the latest updates. For inquiries, please contact [info@arexbio.com](mailto:info@arexbio.com) or your local distributor.

\*Clone Number, Reactivity, Source/Host and Clonality can be found in the product name and Key Features section above.

**DATASHEET****LPO Rabbit Polyclonal Antibody**

CAT. NO. APA16067

**DATA**

Western blot analysis of LPO expression in MCF7 (A) whole cell lysates. (Predicted band size: 70; 80 kD; Observed band size: 70 kD)

**STORAGE**

Store at 4°C short term. For long term storage, store at -20°C, avoiding freeze/thaw cycles.

**NOTE**

For Research Use Only. Not for diagnostic, therapeutics, prophylactic or in vivo use.