

## DATASHEET

# LRFN3 Rabbit Polyclonal Antibody

CAT. NO. APA16069

### KEY FEATURES

Target	LRFN3	Source / Host	Rabbit
Reactivity	Human, Mouse, Rat	Clonality	Polyclonal
Applications	WB	Conjugation	Unconjugated
Form / Buffer	Liquid in 0.42% Potassium phosphate, 0.87% Sodium chloride, pH 7.3, 30% glycerol, and 0.01% sodium azide.	Storage	at-20°C

### BACKGROUND

Cell adhesion molecule that mediates homophilic cell-cell adhesion in a Ca(2+)-independent manner. Promotes neurite outgrowth in hippocampal neurons .

### APPLICATION

To ensure optimal assay performance, AREX recommends conducting reagent titration tailored to each testing system for optimal detection results.

WB	1:500 - 1:2000
----	----------------

\*Results are sample-specific. Please refer to your local assay conditions and test parameters for reference.

### PRODUCT OVERVIEW

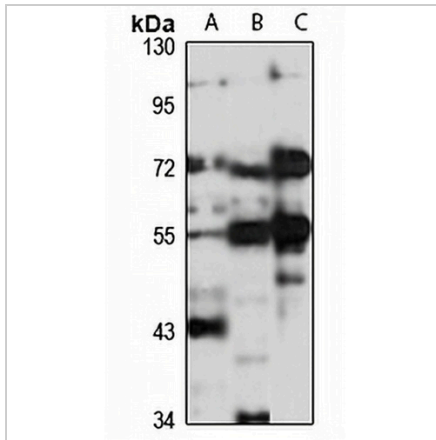
Description	Rabbit polyclonal antibody to LRFN3
Specificity	Recognizes endogenous levels of LRFN3 protein
Antibody Type	Primary antibody
Immunogen	Recombinant fusion protein of human LRFN3. The exact sequence is proprietary.
Purification	The antibody was purified by immunogen affinity chromatography.
Molecular Weight	Predicted: 66 kD; Observed: 70 kD
Form/Buffer	Liquid in 0.42% Potassium phosphate, 0.87% Sodium chloride, pH 7.3, 30% glycerol, and 0.01% sodium azide.
Alternative Names	SALM4; Leucine-rich repeat and fibronectin type-III domain-containing protein 3; Synaptic adhesion-like molecule 4
Gene Symbol	LRFN3
Entrez Gene	79414(Human); 233067(Mouse); 308495(Rat)
SwissProt	Q9BTN0(Human); Q8BLY3(Mouse); B0BNK7(Rat)

\*AREX continuously optimizes our products. Webpage content may not reflect the latest updates. For inquiries, please contact [info@arexbio.com](mailto:info@arexbio.com) or your local distributor.

\*Clone Number, Reactivity, Source/Host and Clonality can be found in the product name and Key Features section above.

**DATASHEET****LRFN3 Rabbit Polyclonal Antibody**

CAT. NO. APA16069

**DATA**

Western blot analysis of LRFN3 expression in HT29 (A), mouse testis (B), rat brain (C) whole cell lysates. (Predicted band size: 66 kD; Observed band size: 70 kD)

**STORAGE**

Store at 4°C short term. For long term storage, store at -20°C, avoiding freeze/thaw cycles.

**NOTE**

For Research Use Only. Not for diagnostic, therapeutics, prophylactic or in vivo use.