

DATASHEET

LRRK1 Rabbit Polyclonal Antibody

CAT. NO. APA16072

KEY FEATURES

Target	LRRK1	Source / Host	Rabbit
Reactivity	Human, Mouse	Clonality	Polyclonal
Applications	WB	Conjugation	Unconjugated
Form / Buffer	Liquid in 0.42% Potassium phosphate, 0.87% Sodium chloride, pH 7.3, 30% glycerol, and 0.01% sodium azide.		Storage at -20°C

BACKGROUND

Serine/threonine-protein kinase which phosphorylates RAB proteins involved in intracellular trafficking . Phosphorylates RAB7A; this activity is dependent on protein kinase C (PKC) activation . Plays a role in the negative regulation of bone mass, acting through the maturation of osteoclasts .

APPLICATION

To ensure optimal assay performance, AREX recommends conducting reagent titration tailored to each testing system for optimal detection results.

WB	1:500 - 1:2000
----	----------------

*Results are sample-specific. Please refer to your local assay conditions and test parameters for reference.

PRODUCT OVERVIEW

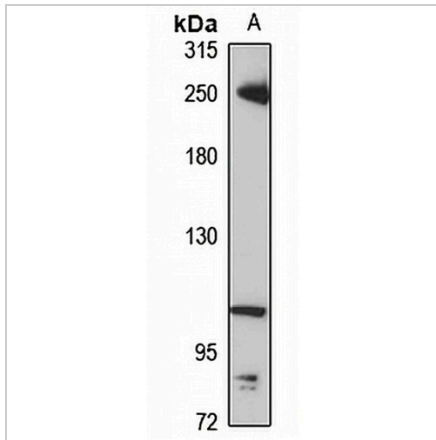
Description	Rabbit polyclonal antibody to LRRK1
Specificity	Recognizes endogenous levels of LRRK1 protein
Antibody Type	Primary antibody
Immunogen	Recombinant fusion protein of human LRRK1. The exact sequence is proprietary.
Purification	The antibody was purified by immunogen affinity chromatography.
Molecular Weight	Predicted: 225 kD; Observed: 250 kD
Form/Buffer	Liquid in 0.42% Potassium phosphate, 0.87% Sodium chloride, pH 7.3, 30% glycerol, and 0.01% sodium azide.
Alternative Names	KIAA1790; Leucine-rich repeat serine/threonine-protein kinase 1
Gene Symbol	LRRK1
Entrez Gene	79705(Human); 233328(Mouse)
SwissProt	Q38SD2(Human); Q3UHC2(Mouse)

*AREX continuously optimizes our products. Webpage content may not reflect the latest updates. For inquiries, please contact info@arexbio.com or your local distributor.

*Clone Number, Reactivity, Source/Host and Clonality can be found in the product name and Key Features section above.

DATASHEET**LRRK1 Rabbit Polyclonal Antibody**

CAT. NO. APA16072

DATA

Western blot analysis of LRRK1 expression in Raji (A) whole cell lysates. (Predicted band size: 225 kD; Observed band size: 250 kD)

STORAGE

Store at 4°C short term. For long term storage, store at -20°C, avoiding freeze/thaw cycles.

NOTE

For Research Use Only. Not for diagnostic, therapeutics, prophylactic or in vivo use.