

**DATASHEET**

**LRWD1 Rabbit Polyclonal Antibody**

CAT. NO. APA16074

**KEY FEATURES**

Target	LRWD1	Source / Host	Rabbit
Reactivity	Human, Mouse, Rat	Clonality	Polyclonal
Applications	WB	Conjugation	Unconjugated
Form / Buffer	Liquid in 0.42% Potassium phosphate, 0.87% Sodium chloride, pH 7.3, 30% glycerol, and 0.01% sodium azide.		Storage at -20°C

**BACKGROUND**

Required for G1/S transition. Recruits and stabilizes the origin recognition complex (ORC) onto chromatin during G1 to establish pre-replication complex (preRC) and to heterochromatic sites in post-replicated cells. Binds a combination of DNA and histone methylation repressive marks on heterochromatin. Binds histone H3 and H4 trimethylation marks H3K9me3, H3K27me3 and H4K20me3 in a cooperative manner with DNA methylation. Required for silencing of major satellite repeats. May be important ORC2, ORC3 and ORC4 stability.

**APPLICATION**

To ensure optimal assay performance, AREX recommends conducting reagent titration tailored to each testing system for optimal detection results.

WB	1:500 - 1:2000
----	----------------

\*Results are sample-specific. Please refer to your local assay conditions and test parameters for reference.

**PRODUCT OVERVIEW**

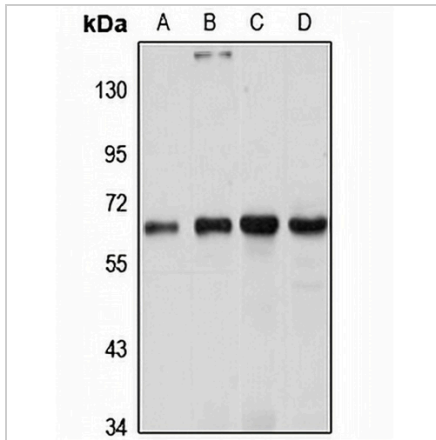
Description	Rabbit polyclonal antibody to LRWD1
Specificity	Recognizes endogenous levels of LRWD1 protein
Antibody Type	Primary antibody
Immunogen	KLH-conjugated synthetic peptide of human LRWD1. The exact sequence is proprietary.
Purification	The antibody was purified by immunogen affinity chromatography.
Molecular Weight	Predicted: 70 kD; Observed: 65 kD
Form/Buffer	Liquid in 0.42% Potassium phosphate, 0.87% Sodium chloride, pH 7.3, 30% glycerol, and 0.01% sodium azide.
Alternative Names	CENP33; ORCA; Leucine-rich repeat and WD repeat-containing protein 1; Centromere protein 33; CENP-33; Origin recognition complex-associated protein; ORC-associated protein; ORCA
Gene Symbol	LRWD1
Entrez Gene	222229(Human); 71735(Mouse)
SwissProt	Q9UFC0(Human); Q8BUI3(Mouse)

\*AREX continuously optimizes our products. Webpage content may not reflect the latest updates. For inquiries, please contact [info@arexbio.com](mailto:info@arexbio.com) or your local distributor.

\*Clone Number, Reactivity, Source/Host and Clonality can be found in the product name and Key Features section above.

**DATASHEET****LRWD1 Rabbit Polyclonal Antibody**

CAT. NO. APA16074

**DATA**

Western blot analysis of LRWD1 expression in HepG2 (A), Jurkat (B), mouse thymus (C), rat testis (D) whole cell lysates. (Predicted band size: 70 kD; Observed band size: 65 kD)

**STORAGE**

Store at 4°C short term. For long term storage, store at -20°C, avoiding freeze/thaw cycles.

**NOTE**

For Research Use Only. Not for diagnostic, therapeutics, prophylactic or in vivo use.