

DATASHEET

LSAMP Rabbit Polyclonal Antibody

CAT. NO. APA16075

KEY FEATURES

| | | | |
|---------------|---|---------------|---------------------|
| Target | LSAMP | Source / Host | Rabbit |
| Reactivity | Human, Mouse, Rat | Clonality | Polyclonal |
| Applications | WB | Conjugation | Unconjugated |
| Form / Buffer | Liquid in 0.42% Potassium phosphate, 0.87% Sodium chloride, pH 7.3, 30% glycerol, and 0.01% sodium azide. | | Storage at -20°C |

BACKGROUND

Mediates selective neuronal growth and axon targeting. Contributes to the guidance of developing axons and remodeling of mature circuits in the limbic system. Essential for normal growth of the hippocampal mossy fiber projection .

APPLICATION

To ensure optimal assay performance, AREX recommends conducting reagent titration tailored to each testing system for optimal detection results.

| | |
|----|----------------|
| WB | 1:500 - 1:2000 |
|----|----------------|

*Results are sample-specific. Please refer to your local assay conditions and test parameters for reference.

PRODUCT OVERVIEW

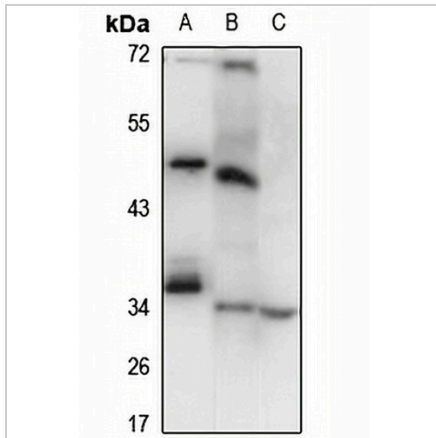
| | |
|-------------------|---|
| Description | Rabbit polyclonal antibody to LSAMP |
| Specificity | Recognizes endogenous levels of LSAMP protein |
| Antibody Type | Primary antibody |
| Immunogen | Recombinant fusion protein of human LSAMP. The exact sequence is proprietary. |
| Purification | The antibody was purified by immunogen affinity chromatography. |
| Molecular Weight | Predicted: 37 kD; Observed: 34; 37 kD |
| Form/Buffer | Liquid in 0.42% Potassium phosphate, 0.87% Sodium chloride, pH 7.3, 30% glycerol, and 0.01% sodium azide. |
| Alternative Names | IGLON3; LAMP; Limbic system-associated membrane protein; LSAMP; IgLON family member 3 |
| Gene Symbol | LSAMP |
| Entrez Gene | 4045(Human); 268890(Mouse); 29561(Rat) |
| SwissProt | Q13449(Human); Q8BLK3(Mouse); Q62813(Rat) |

*AREX continuously optimizes our products. Webpage content may not reflect the latest updates. For inquiries, please contact info@arexbio.com or your local distributor.

*Clone Number, Reactivity, Source/Host and Clonality can be found in the product name and Key Features section above.

DATASHEET**LSAMP Rabbit Polyclonal Antibody**

CAT. NO. APA16075

DATA

Western blot analysis of LSAMP expression in Jurkat (A), mouse small intestine (B), rat small intestine (C) whole cell lysates. (Predicted band size: 37 kD; Observed band size: 34; 37 kD)

STORAGE

Store at 4°C short term. For long term storage, store at -20°C, avoiding freeze/thaw cycles.

NOTE

For Research Use Only. Not for diagnostic, therapeutics, prophylactic or in vivo use.