

**DATASHEET**

**LSM12 Rabbit Polyclonal Antibody**

CAT. NO. APA16076

**KEY FEATURES**

Target	LSM12	Source / Host	Rabbit
Reactivity	Human, Mouse	Clonality	Polyclonal
Applications	WB	Conjugation	Unconjugated
Form / Buffer	Liquid in 0.42% Potassium phosphate, 0.87% Sodium chloride, pH 7.3, 30% glycerol, and 0.01% sodium azide.		Storage at -20°C

**BACKGROUND**

Nicotinic acid adenine dinucleotide phosphate (NAADP) binding protein binding protein . Confers NAADP sensitivity to the two pore channel complex (TPCs) by acting as TPC accessory protein necessary for NAADP-evoked Ca(2+) release .

**APPLICATION**

To ensure optimal assay performance, AREX recommends conducting reagent titration tailored to each testing system for optimal detection results.

WB	1:500 - 1:2000
----	----------------

\*Results are sample-specific. Please refer to your local assay conditions and test parameters for reference.

**PRODUCT OVERVIEW**

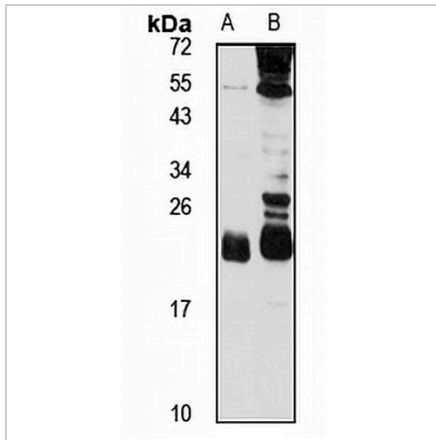
Description	Rabbit polyclonal antibody to LSM12
Specificity	Recognizes endogenous levels of LSM12 protein
Antibody Type	Primary antibody
Immunogen	Recombinant fusion protein of human LSM12. The exact sequence is proprietary.
Purification	The antibody was purified by immunogen affinity chromatography.
Molecular Weight	Predicted: 21 kD; Observed: 22 kD
Form/Buffer	Liquid in 0.42% Potassium phosphate, 0.87% Sodium chloride, pH 7.3, 30% glycerol, and 0.01% sodium azide.
Alternative Names	Protein LSM12 homolog
Gene Symbol	LSM12
Entrez Gene	124801(Human); 268490(Mouse)
SwissProt	Q3MHD2(Human); Q9D0R8(Mouse)

\*AREX continuously optimizes our products. Webpage content may not reflect the latest updates. For inquiries, please contact [info@arexbio.com](mailto:info@arexbio.com) or your local distributor.

\*Clone Number, Reactivity, Source/Host and Clonality can be found in the product name and Key Features section above.

**DATASHEET****LSM12 Rabbit Polyclonal Antibody**

CAT. NO. APA16076

**DATA**

Western blot analysis of LSM12 expression in Jurkat (A), mouse brain (B) whole cell lysates. (Predicted band size: 21 kD; Observed band size: 22 kD)

**STORAGE**

Store at 4°C short term. For long term storage, store at -20°C, avoiding freeze/thaw cycles.

**NOTE**

For Research Use Only. Not for diagnostic, therapeutics, prophylactic or in vivo use.